

# **SD Mesa WBL and Employment Assistance Mapping**

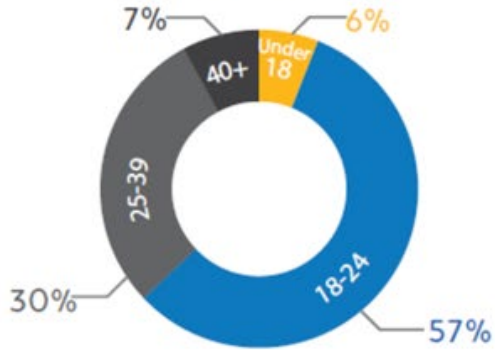
Presented By:

WE ARE *Mesa*

*The Leading College of Equity and Excellence*

# Mesa Demographics (student population etc)

## STUDENT AGE



## GENDER



55%

Female Students



45%

Male Students

## ETHNICITY



Latino 37% · Caucasian 32% · Asian 11% · African American 6% · Two or more 6% · Filipino 5% · Other 6% · Unreported 6% · Native American <1% · Pacific Islander <1%

## MILITARY



4,332

Active Military/  
Veteran/ Spouse/  
Dependent

Monica Romero- Acting Dean of  
Business and Technology



**Claudia Estrada-Howell**  
Supervisor



**Mary Garcia**  
Adjunct Transfer &  
Career Counselor



**Mary Eden**  
Adjunct Transfer &  
Career Counselor



**Raquel Sojourner**  
Career  
Coordinator



**Kristina Carson**  
Career  
Coordinator



**Olivia Picolla**  
Student Services  
Technician



**Alicia Lopez**  
Senior Student  
Services Assistant



**Shawn  
Fawcett**  
WBL Coordinator



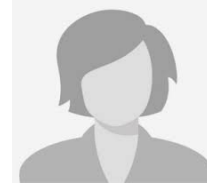
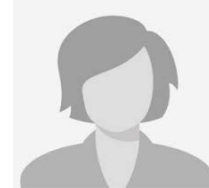
**Katlin  
Choi**  
WBL Coordinator



**Pavel  
Consuegra**  
Internship Coordinator



**Melanie Baéza-  
McCray**  
Employer Relations



**Our Team**



# Mesa College Engagement

## Process Map

**SAN DIEGO  
MESA COLLEGE**

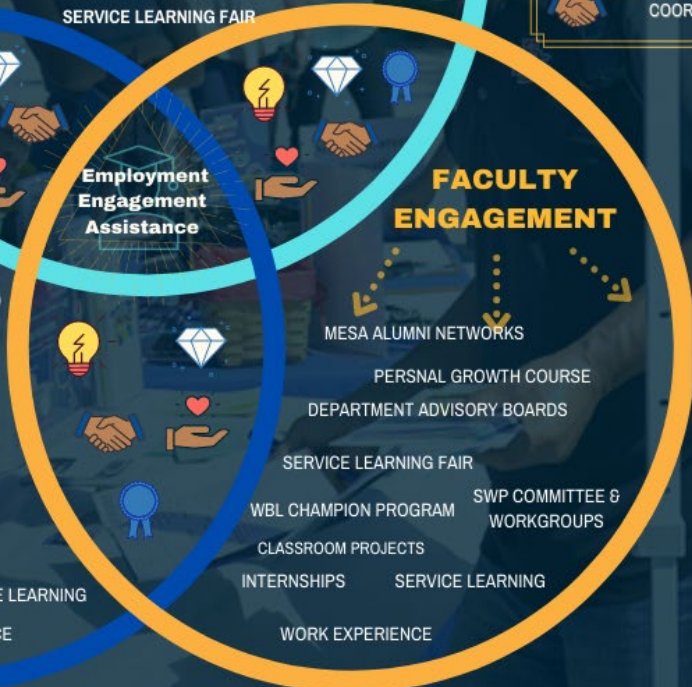
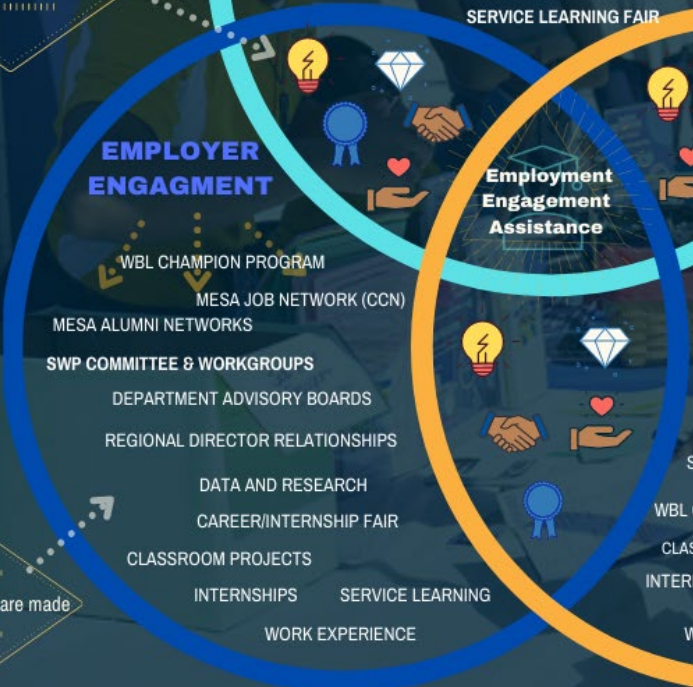
Employer Development & Services

Who provides connections

How connections are made



- CAREER CENTER STAFF
- INTERNSHIP COORDINATOR
- CAREER COUNSELORS
- WBL COORDINATORS
- EMPLOYER ENGAGEMENT COORDINATOR



Employment Engagement Assistance

# Student Engagement with WBL

## Student Learns about Career Center / WBL/Employment Services

- Career Presentations - Classroom/Virtual
- Job Network - Job Board
- Referring students to WBL Campus activities/events
- Mesa Journeys - Student Services Connection Tool

## Student Outreaches to Career Center / WBL/Employment Services

- Student contacts Career Center
- Student contacts Counselor/Coordinator
- Job Network - Student Appts w/ Internship Coordinator
- 24/7 Website ChatBot

# Student Engagement with WBL (cont)

## Student Participates in Appointment/Activity/Event

- Major & Career Exploration and Readiness Appts
- Jobs | Internships | Resume | Interview Prep
- Career Assessments (MBTI & Strong Interest)
- Career Peer Ambassador Program & Workshops
- Career Fest- Career/ Internship /Service Learning / Majors Fairs
- Employer Panels
- Student Internships
- Work Experience Courses
- Service Learning/Community Service/Volunteering

## Student Completes Career Readiness Goal

- Student Career Counseling Outcomes Survey
- Career Peer Ambassador Pre/Post Survey
- SARS Documentation
- WBL Data Collection

# Faculty Engagement with WBL

## Faculty Learns about WBL

- WBL & Career Center Websites
- Department and Committee Meetings
- Faculty referrals (Word-of-Mouth)
- Media Marketing
- Flex Workshops

## Faculty Reaches out for WBL Collaboration

- Explores needs and develops opportunities
- Review how it fits into WBL continuum
- Create reflection assignment
- Connect to other departments, resources or events on campus

## Completion of WBL Activity and Assessment

- SARS Tracking
- WBL Activity Tracking Form
- Post Activity Assessment
- Next Iteration of Activity

# Faculty Engagement with WBL Examples

## Faculty Learns about WBL

SAN DIEGO MESA COLLEGE  
Work-Based Learning

SpeakOut Flex Workshop #5815

## Service Learning & Sentipensante Pedagogy

FRIDAY, NOVEMBER 6TH, 10AM-12PM

<https://cccconfer.zoom.us/my/ikarizoomroom>

"Educating for wholeness, social justice and liberation." - Laura Rendón

You are invited to join us and explore how to conceptualize and manifest the artist, activist, healer, and humanitarian in yourself and your students.

Examples will be shared by colleagues who embraced service learning to facilitate rich learning experiences that connect to the wholeness of our humanity and community.

### Questions?

Contact Jill Moreno Ikarı, [jmorenoi@sdccd.edu](mailto:jmorenoi@sdccd.edu); Pegah Motaleb, [pmotaleb@sdccd.edu](mailto:pmotaleb@sdccd.edu); Jennifer Derilo, [jderilo@sdccd.edu](mailto:jderilo@sdccd.edu); Katlin Choi, [kchoi@sdccd.edu](mailto:kchoi@sdccd.edu)



Liked by rayglz and 26 others  
mary\_glz Today we took a break from planting new veggies and cleaned up the garden a bit from weeds. This was no joke! Lol but the feeling you get after being done and seeing your work is like no other 😊 plus I made a new friend! I named him "woody" haha  
#servicelearning #volunteering

## Faculty Reaches out for WBL Collaboration

### SAN DIEGO MESA COLLEGE

A Collaboration of Work-Based Learning & Career Center with  
**Professor Chris Sullivan's English 101X**

Monday, February 10th  
**MBTI Personality Type  
and Your Career**



**Raquel Sojourner**  
Counselor, Career Center Coordinator  
San Diego Mesa College

*Do you know your psychological personality type? Learn how your natural personality preferences affect your preferred work tasks and environments.*

Raquel is dedicated to providing empowering academic, transfer, personal and career counseling to students. A San Diego native and graduate of UC Irvine and SDSU, she is a lover of multicultural food, yoga, global travel and great conversations.

Her passion is helping students determine the best way they can create and pursue the lives they desire.

Wednesday, February 26th  
**I Can Do That with  
English?**



**Antonio Alarcón**  
Dean, Instructional Services  
San Diego Community College District

Antonio's experience spans over 14 years at Cabrillo, Hartnell, and Antelope Valley Colleges and SDCCD. As Dean, he helps to coordinate, facilitate, and support district-wide efforts in strategic planning, accreditation, grants, instructional research, and special initiatives. Antonio earned his A.A. from Antelope Valley College, B.A. in English and Literary Journalism from UC Irvine, M.F.A. and M.A. in English from National University, and is currently working on his doctorate. He is passionate about students and committed to equity and success.

## Completion of WBL Activity and Assessment

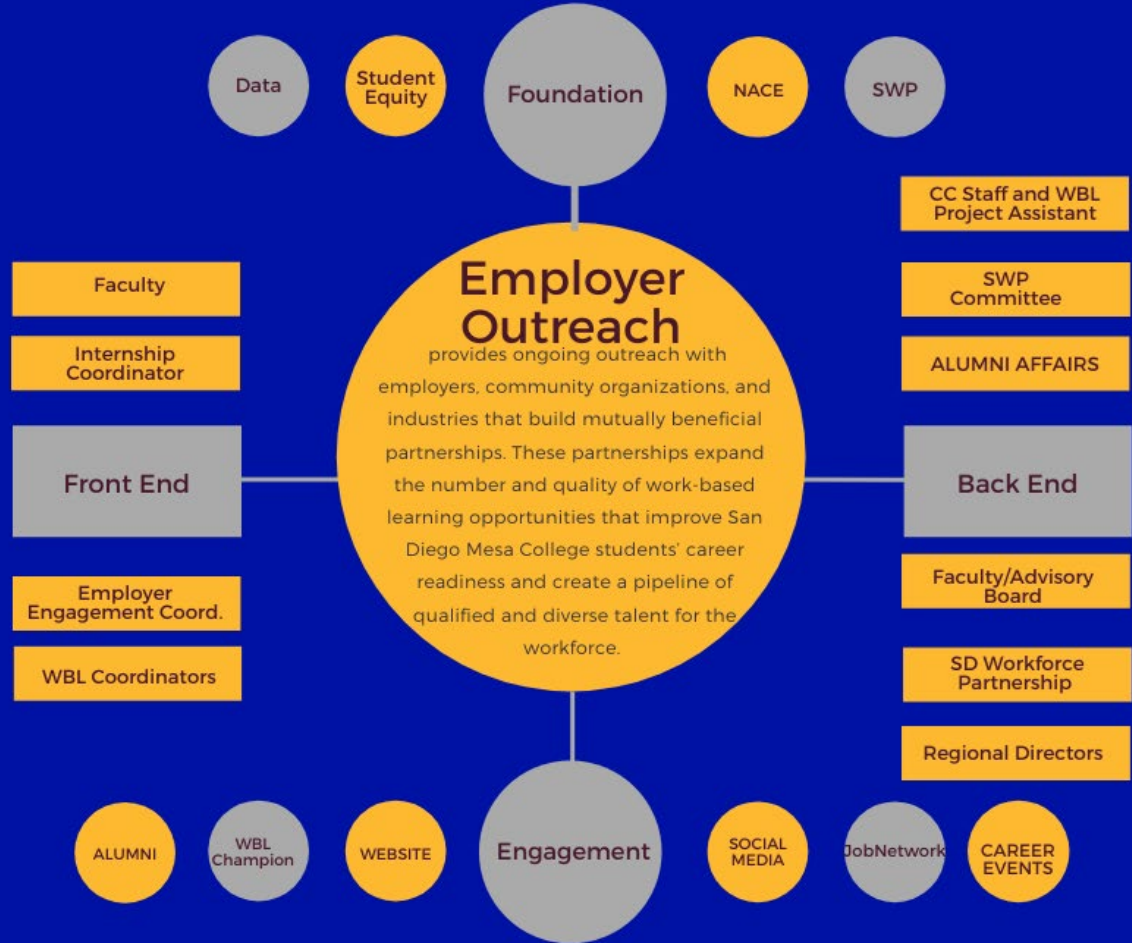


**Grace Lee**

Business student who served as a student moderator for the Pathways to Entrepreneurship Series  
*The Good, The Bad, & The Ugly of Being an Entrepreneur | Student/Alumni Panel*



# Employer Engagement Model



# Employment Engagement Examples

## Employer /Alumni Outreach and Engagement

SAN DIEGO MESA COLLEGE  
Work-Based Learning

**San Diego Mesa College Employer Engagement Survey**  
Mesa College developed this survey to assist in moving forward with our employer engagement efforts; our goal is to help students explore career options and teach them the necessary skills needed to be successful in today's labor market and build a more highly-skilled workforce and ultimately meet the needs of your company/organization.

The survey will take less than 5 MINUTES to complete and closes Wednesday, March 20, 2025 at 11:59 PM PST. Thank you for your time and feedback.

### INVEST IN YOUR TALENT PIPELINE

San Diego Mesa College Work-Based Learning provides ongoing outreach with community partners such as employers, community organizations, and industries that build mutually beneficial partnerships to expand the number and quality of professional learning opportunities improving Mesa College students' career readiness and creating a pipeline of qualified and diverse talent for the workforce.

### ACCESS QUALITY TALENT & DIVERSIFY YOUR PIPELINE

Mesa College strives to be a leading college of equity and excellence, which includes our commitment to our immigrant, undocumented, DACA, Muslim, LGBTQ+, and Asian students. We are proud to be designated as a Hispanic Serving Institution (HSI) which means we are a reflection of our students, their cultures, values, and life experiences.

Mesa College's diverse community of students can contribute to your teams, expand your organization's overall knowledge, increase creativity and innovation, and create space for equity in the workplace and beyond. Students graduate from Mesa College having countless opportunities to gain the knowledge, work habits, and character traits necessary to succeed in your organization's culture and today's rapidly changing work environment.

### OPTIMIZE YOUR TIME

Your time is as valuable as your involvement! By becoming a company partner with Mesa College, your organization will help nurture student career exploration, improve training of desired skills, and increase interest in working for your company. Our WBL team will work directly with your organization to develop an customized partnership plan to



## Employer/Alumni Reaches Out and Connections Are Made

Exploring career options & standing out in the job market with 21st Century professional skills

### EMPLOYER PANEL



Brock Davies

#### Trainer & Business Owner - F45

Brock Davies started off his career as a personal trainer, building up his business to contract with international brand Anytime Fitness, where his company "Be Inspired" onboarded all trainers for 11 franchises. Leaving the personal training industry, Brock became a professional rugby player for Team Australia. Later, Brock traded in his rugby cleats for shoulder pads after enrolling as a student for Colorado State University where he was a DII Defensive lineman and helped his team win the national championship. After three seasons, Brock left and was an undrafted free agent whom later attended the tryouts for the New England Patriots. Although the NFL was not in his future, Brock Davies continued his passion in health and fitness, opening his very own F45 studio in San Diego and was nominated for The World's most Inspirational Male Trainer. Brock believes F45 allows all new trainers opportunities to learn real world experience in the fastest-growing fitness franchise EVER.



Eric Henson

#### Policy Advisor - City of San Diego

Eric is a Policy Advisor for the City of San Diego Council District 4 office led by Councilmember Monica Montgomery. Before he transferred to his job under the city council, he served two months in 2018 under the City of San Diego's Development Services Department as a Zoning Investigator. His policy areas of focus under the council office include land use, environmental planning and community development. Eric's work experience journey consists of internships at the federally-managed San Diego Housing Commission's Workforce and Economic Development Department, the City of San Diego's Human Resources Work Readiness Team, the City of San Diego's Planning Department, and the San Diego Unified Port District's Development Services Department. He received his Master's in City Planning from SDSU (2017), with undergrad degrees from UC San Diego in Urban Studies (2014), and Political Science at San Diego City College (2011).

*"Wow, the students were wonderful! I greatly appreciate all of the kind words from them and I'm so happy to hear that they found it valuable. And yes, I am definitely open to other collaborations..." Professional Coach*

*"The students did an amazing job given the crazy circumstances of Covid-10 as it impacts their access to data, information and participants in surveys. The survey led by [students], was well thought out and provided additional insights into an industry..." Senior Project Manager*

## Mesa Continues Engagement and Tracks Progress

SAN DIEGO MESA COLLEGE

### CERTIFICATE of Appreciation



presented to

For your collaboration and partnership in support of student's Work-Based Learning at San Diego Mesa College.

DATE

*Pamela T. Lusef*  
Pamela T. Lusef, Ed.D.  
President, San Diego Mesa College

*"What a great opportunity for the students to be able to practice their skills. I came back telling all my coworkers of the great experience it was." -Talent Acquisition Partner*

# Tracking, Collecting & Reporting

## What:

- **Employers**
  - WBL Engagement
  - Student Employment
- **Faculty**
  - Classroom WBL Activities
- **Students**
  - Outside the Classroom
  - In the Classroom

## How:

- SARS
- Student Management System



# WBL Data





## AY 19-20 (Unduplicated)

89 faculty

53 departments and programs

53 types of WBL activities


- Career Panels
- Speaker Events
- Service Learning
- Internship Fair
- Majors @ Mesa Fair

18-19		19-20
406	Campus Partners 	1,030
546	Employer Connections 	464
225	Events 	153
2,252	Students Served 	4,343

# Strengths & Challenges

- Amazing Team
- Executive Support
- All involved in the Strong Workforce Committee
- Regional Support
- Career Services and WBL live in different divisions
- Define and share WBL roles and responsibilities among team and with Career Center to identify ways we can collaborate and support each other
- WBL perceptions of it only being for CTE when it is actually for ALL programs
- Additional WBL full time positions are needed to meet the size of the campus WBL needs

# Where are we going?

- Analyze
  - Curriculum
  - Professional Learning
  - Strategic Planning
  - Expanding Partnerships
  - Expand Industry Involvement
- 

# Thank you

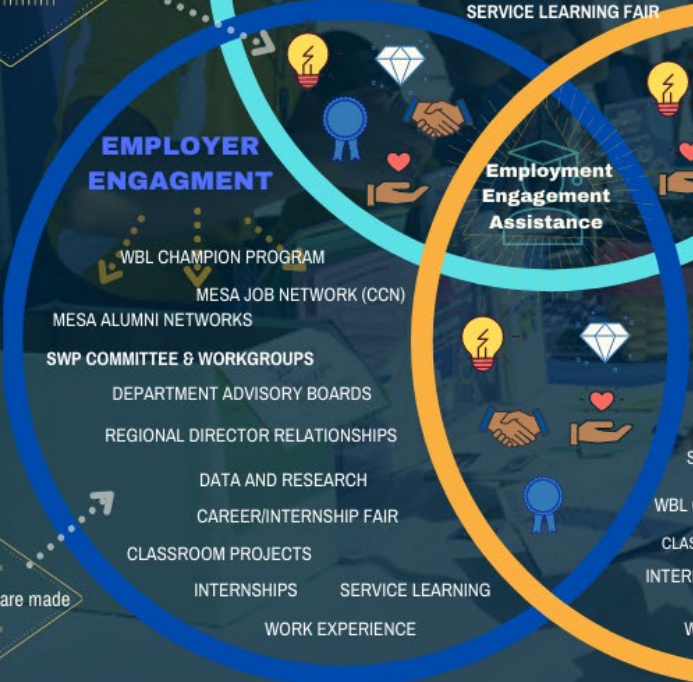
# Questions

## SAN DIEGO MESA COLLEGE

### Employer Development & Services

Who provides connections

How connections are made



- CAREER CENTER STAFF
- INTERNSHIP COORDINATOR
- CAREER COUNSELORS
- WBL COORDINATORS
- EMPLOYER ENGAGEMENT COORDINATOR