



Palomar College
Work Based Learning and Job Placement Process Demonstration



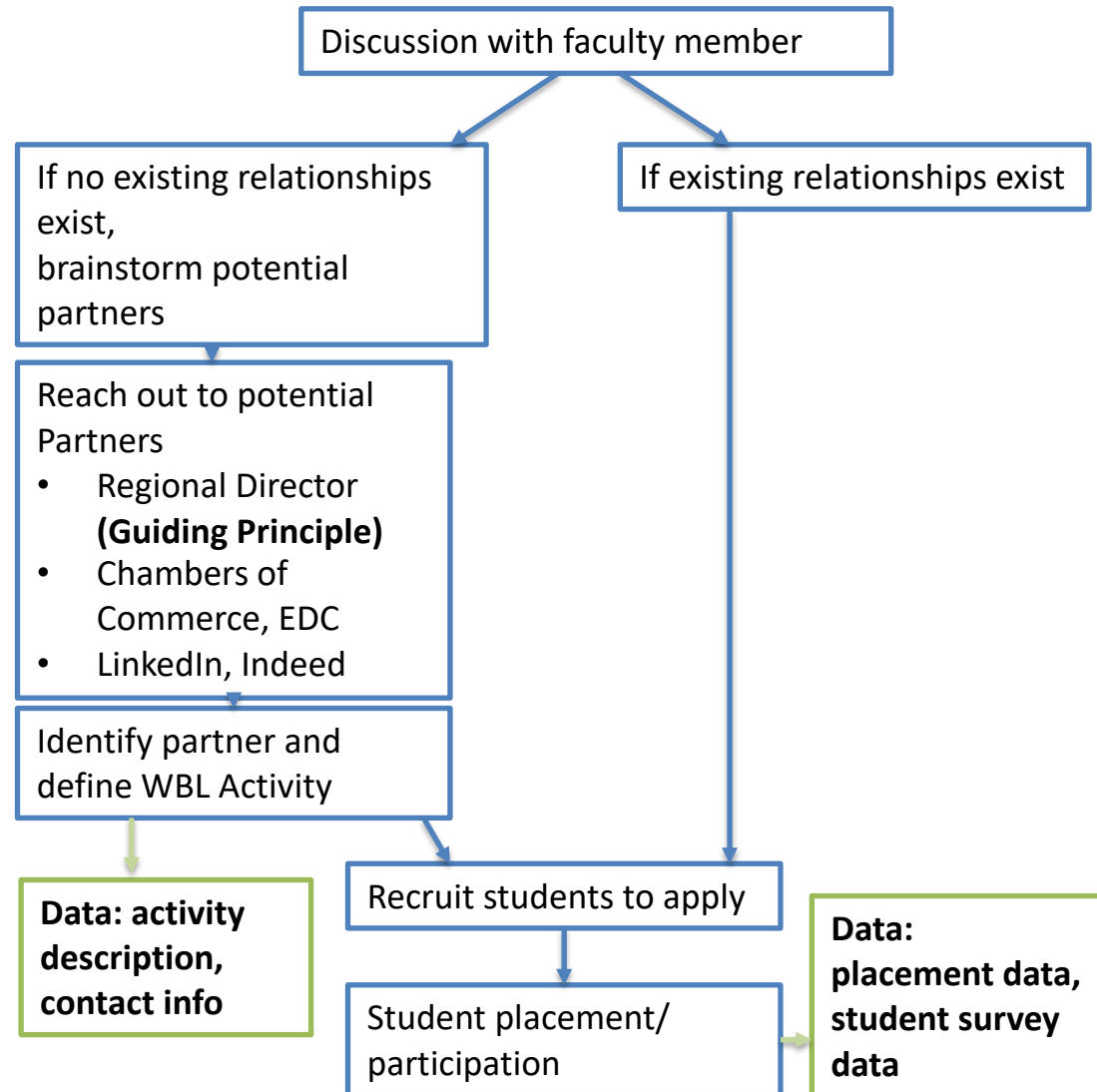
Team

- Dr. Angela Kong, Service Learning Coordinator
- Bruce Reaves, Job Placement Case Manager
- Jason Jarvinen, Work Experience Coordinator
- Rosie Antonecchia, Career Center Director

- Nichol Roe, Interim Dean for Career, Technical and Extended Education
- Leslie Salas, Dean, Counseling Services

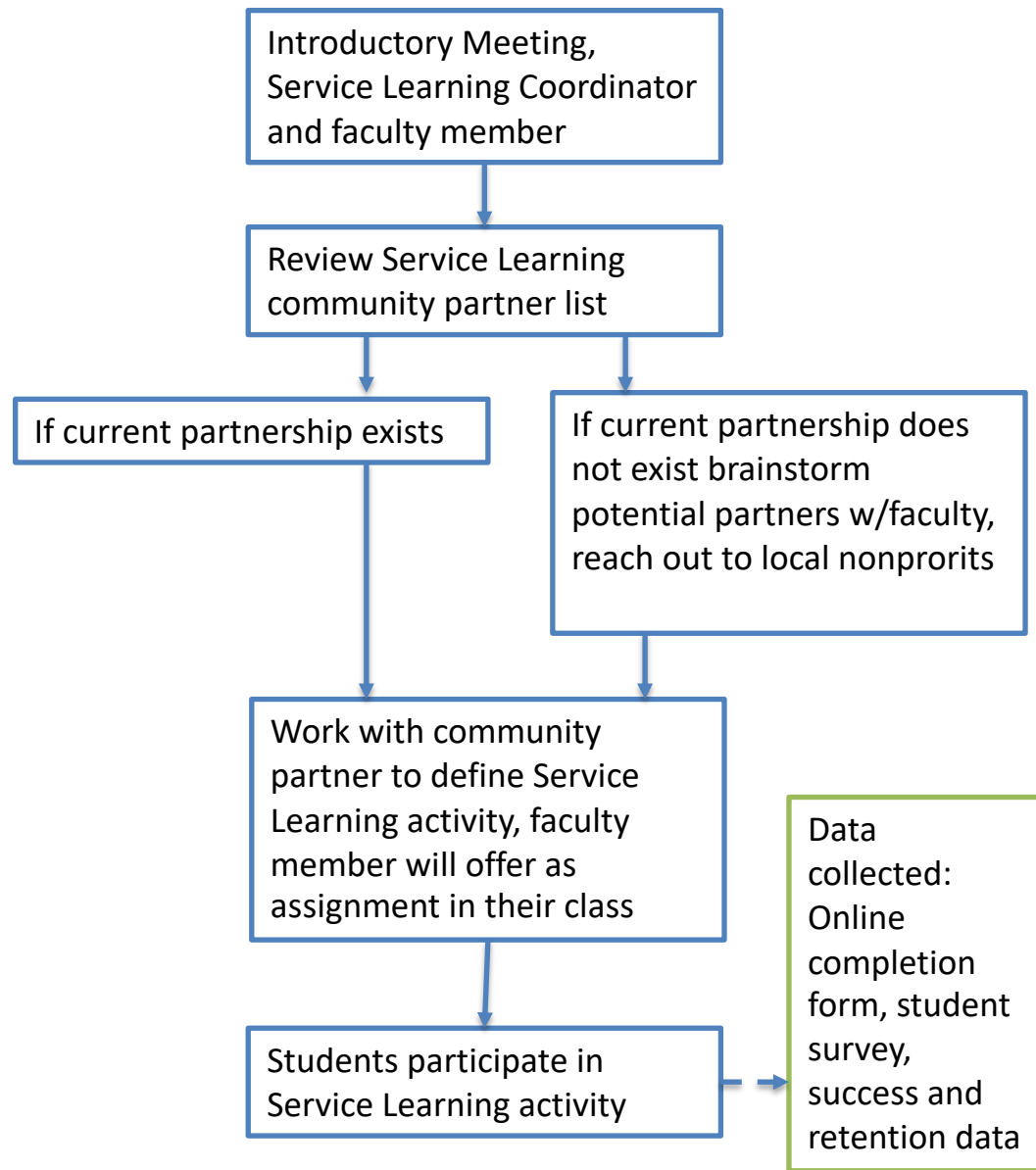


Engaging Faculty About WBL Seasoned Career Ed Faculty Member





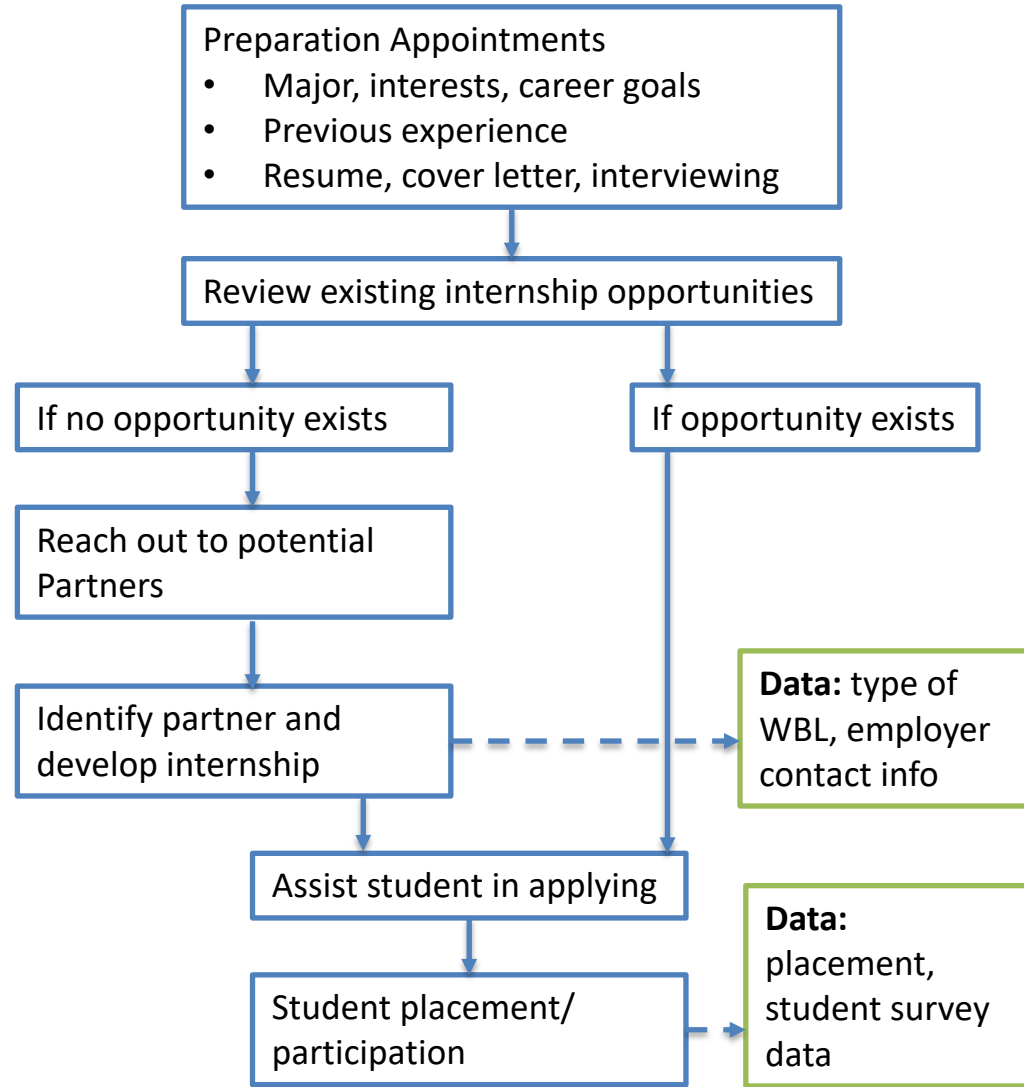
Engaging Faculty About WBL New, Non-Career Ed Faculty Member





Engaging Students About WBL

Student reaches out about finding an internship



Job Placement Eligibility

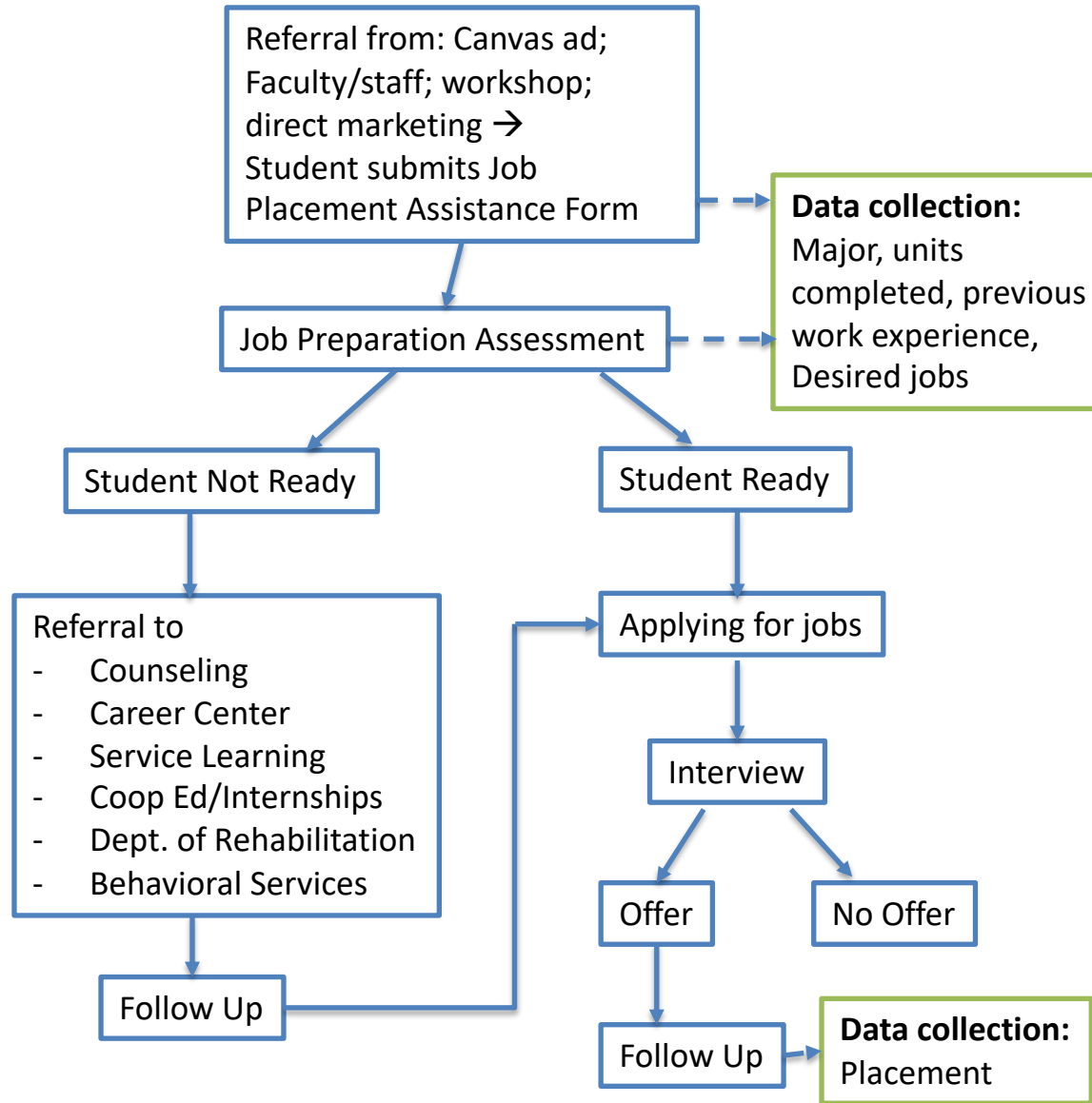
Identifying Students

- Have education plan
- Pursuing a certificate, associates, or transfer degree
- 12 – 24 units completed in major or near graduation
- Participated in the following?
 - Volunteering
 - Service Learning
 - Internship/Coop Ed
 - Work related to major
- Please identify job titles you are interested in (search online if not sure)



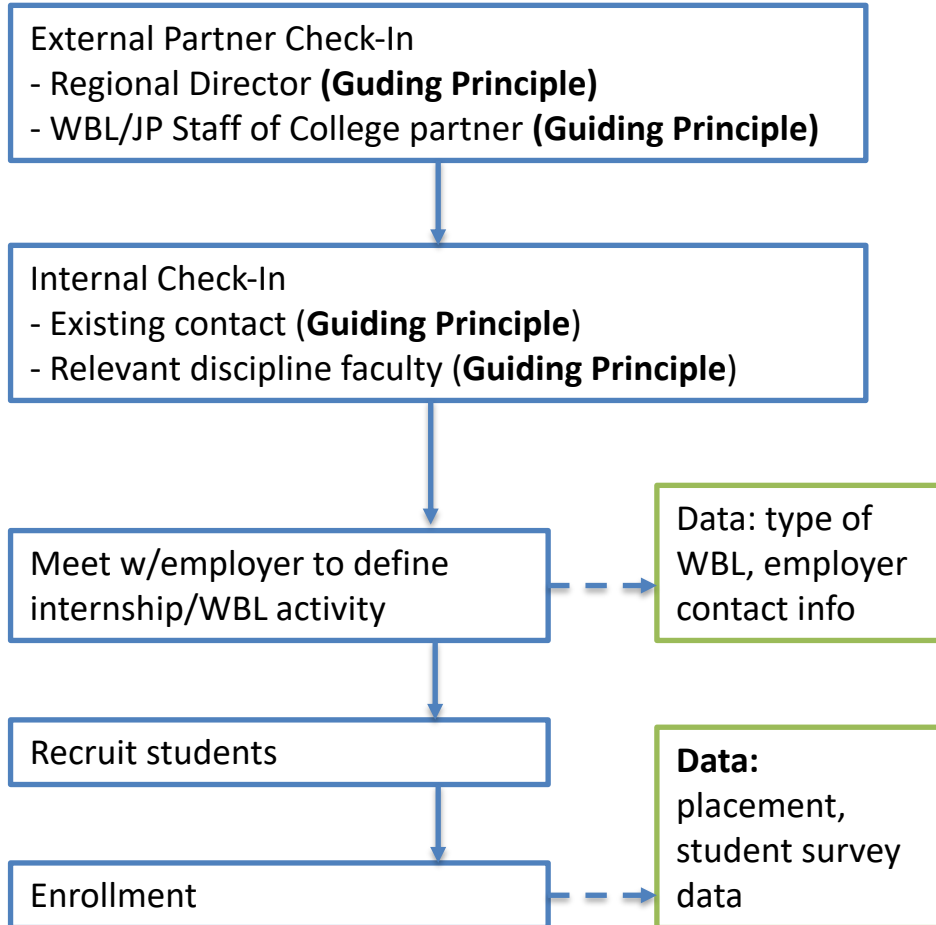


Job Placement

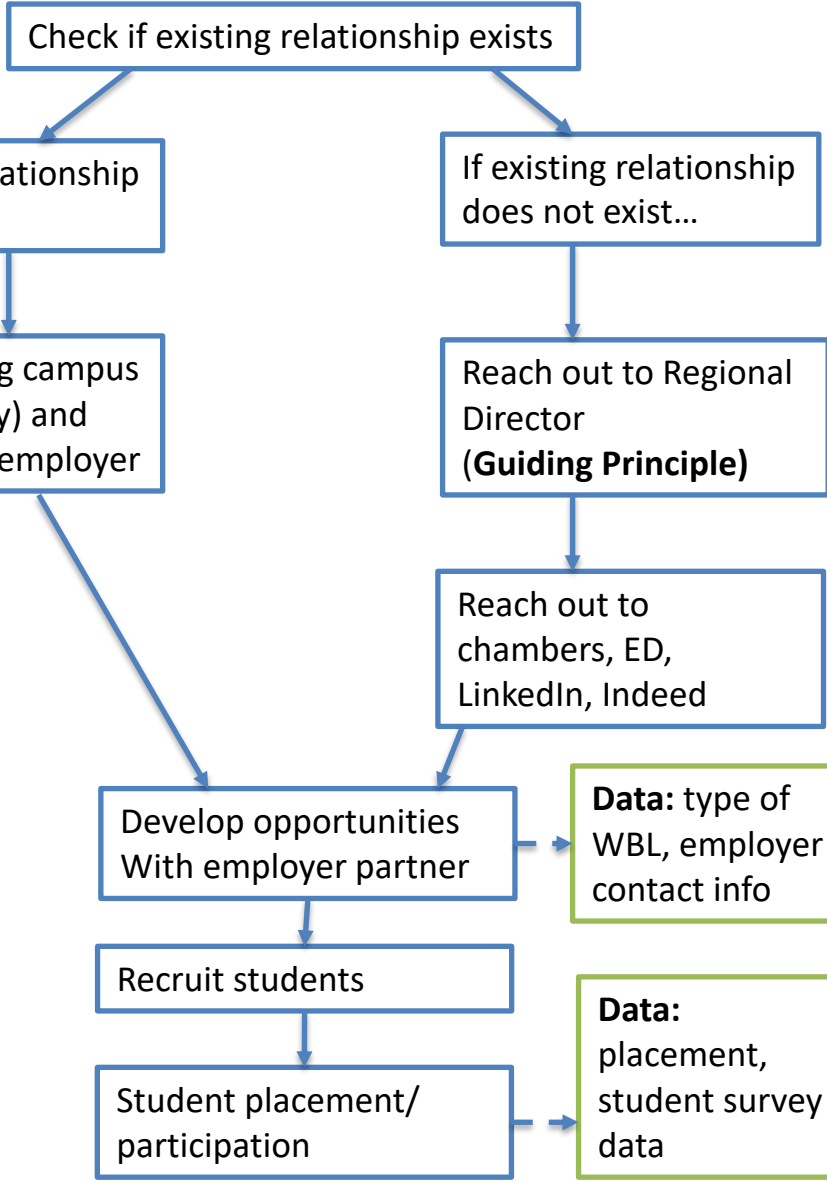


Employer Reaches out to College

Interested in establishing an internship program



Outreach to Employers





Thank you