

Overview

Strengths

- Collaboration between Career Center, JPC and WBLC
- Have touched base with all departments campus and evaluated current WBL opportunities
- Have assisted in incorporating WBL, Career Development resources, and/ or soft skills development with majority of departments on campus

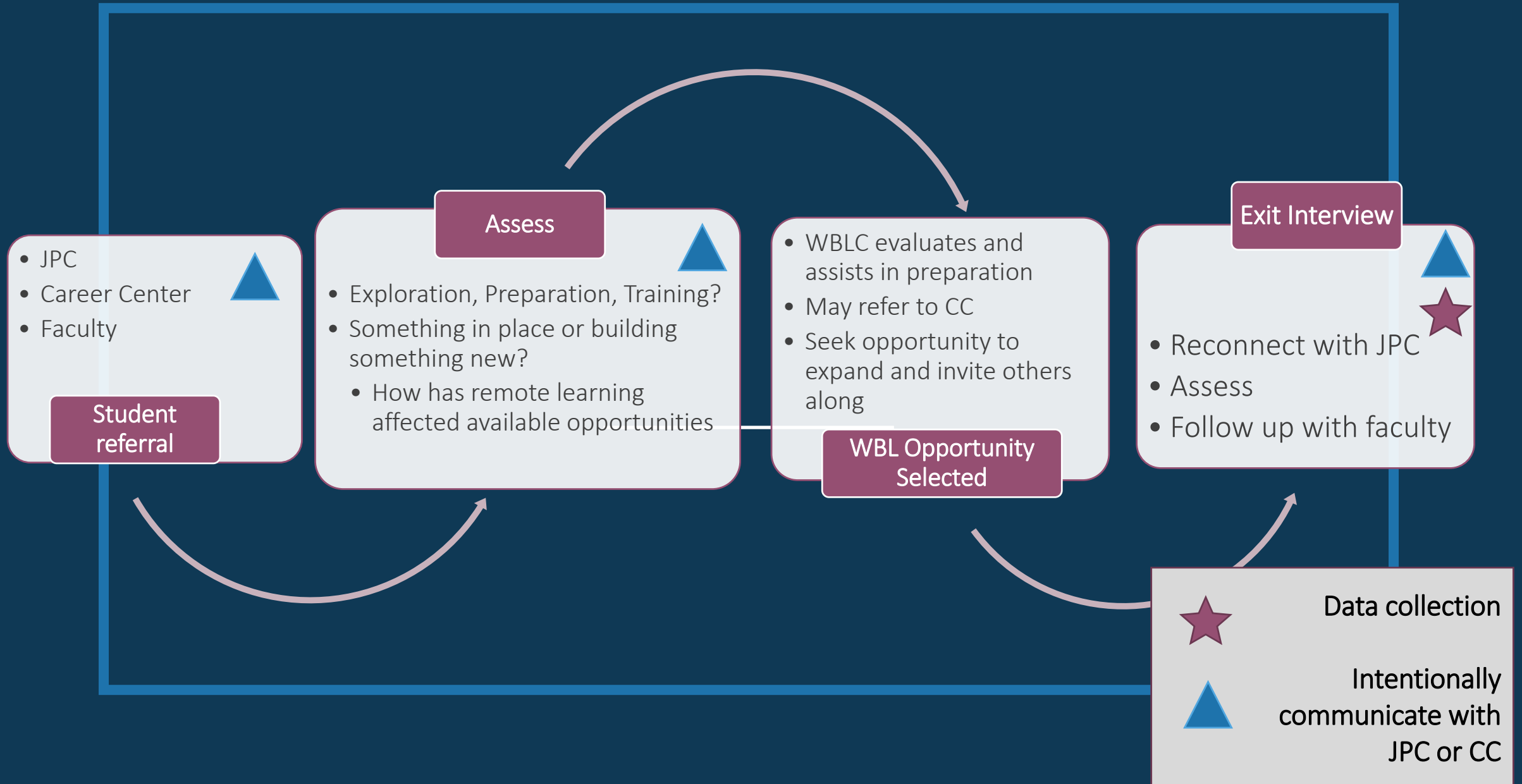
Opportunities

- Reporting/ SG21
- Mathematics, Chemistry, Physical Science and Biology (STEM outside Biotech)
- Overall communication/ miscommunication/ places of disconnect
- Soft Skills/ NWoW

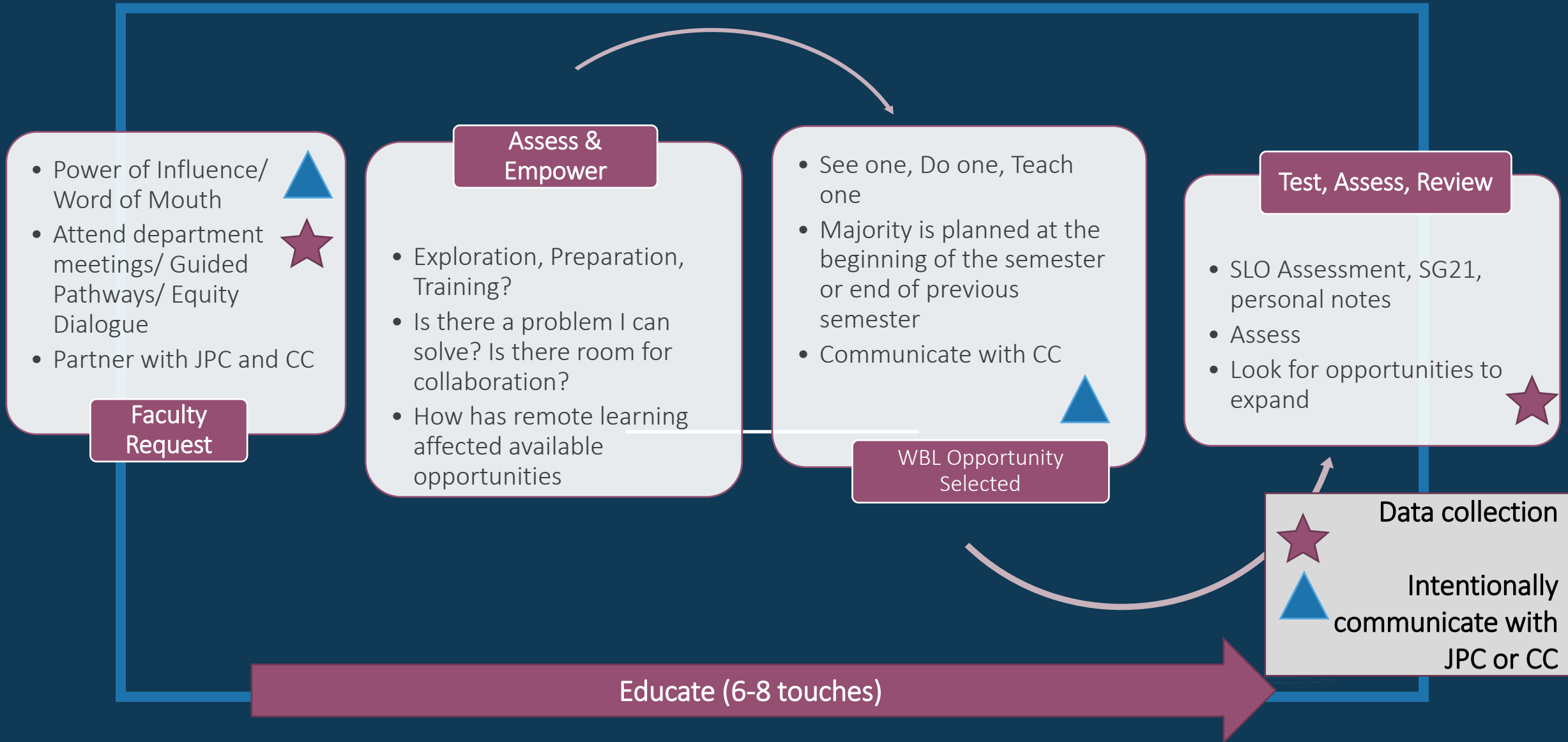
Looking Ahead 2021

- Evaluation process for faculty (eg: Which WBL opportunity is right for your course?)
- Evaluation process for internships similar to Alex's Job Placement
- Explore virtual support for faculty to share ideas and collaborate

Student Request WBL

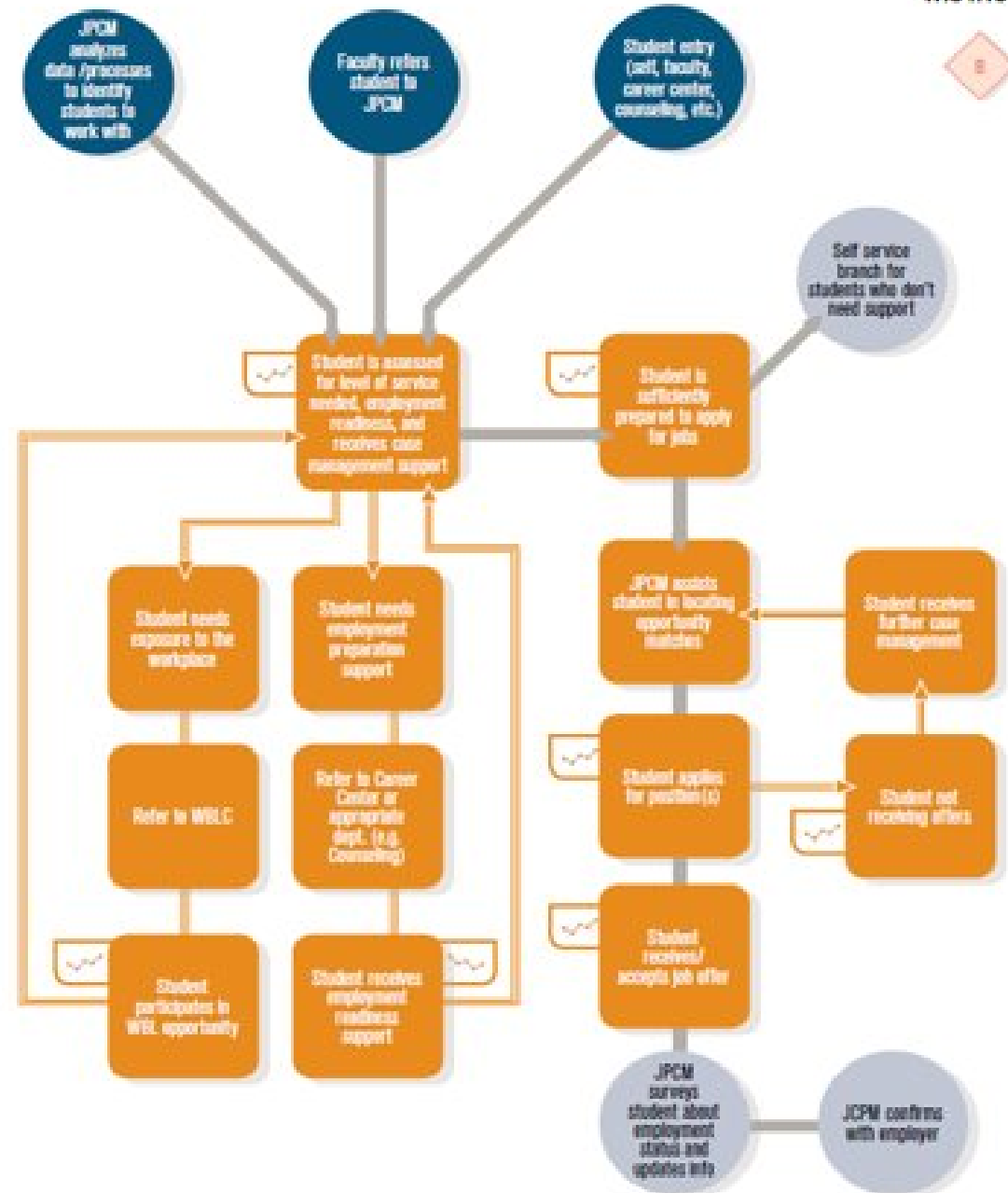


Faculty Request WBL



Job Placement Process Map

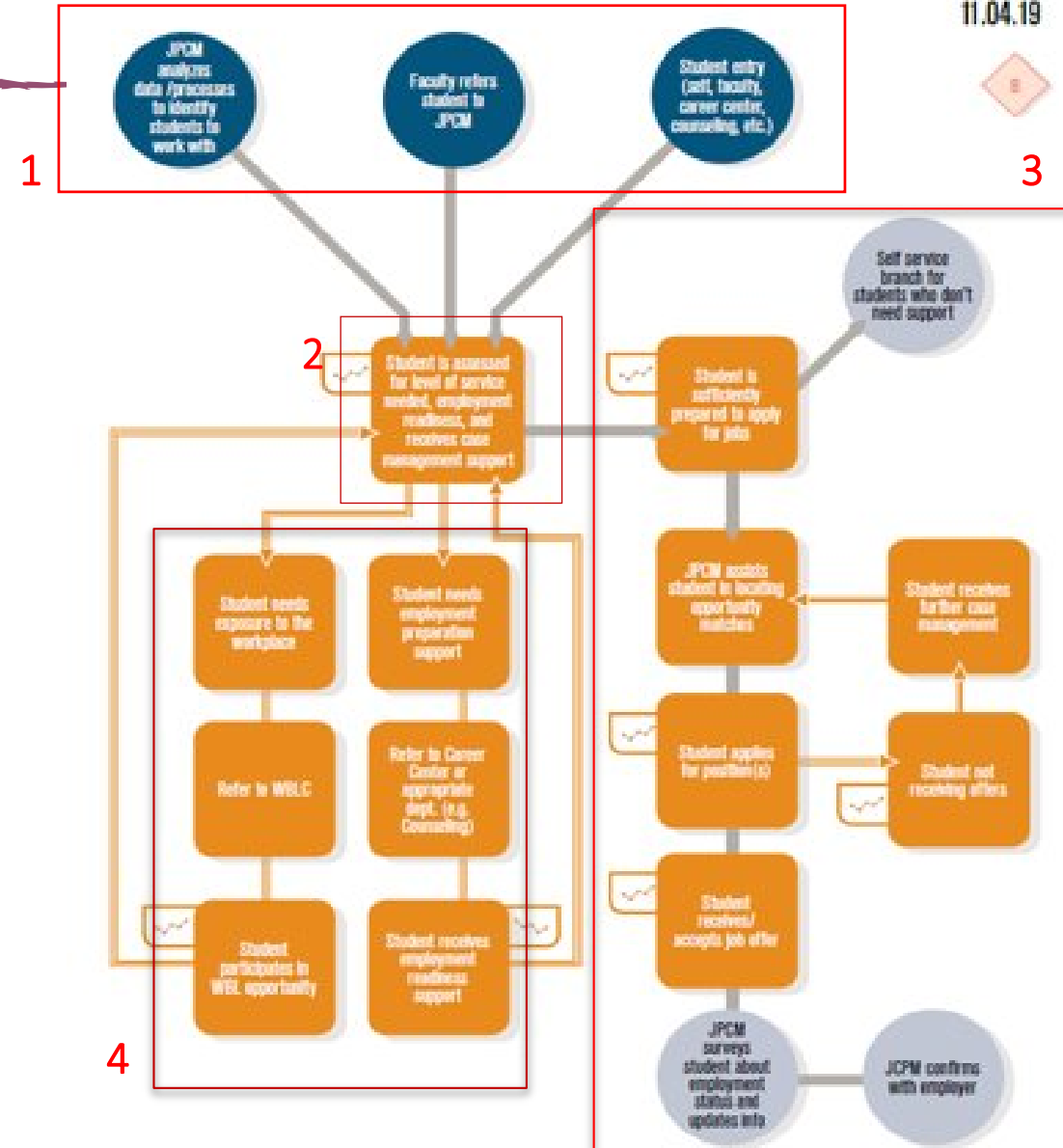
Job Placement Process Map



Job Placement Process

1. JPCM receives student through faculty referral or database search
2. Student is provided intake form to assess level of readiness
3. If ready, student is tracked through email/phone communication from job search to placement
4. If not ready, student is referred to WBLC or Career Center for additional skill readiness before returning to JPCM

Job Placement Process Map



Guiding Practices of Employer Relations

- Reach out through personal contacts
- Nepris
- Intentional Networking
- Previous Events/ Established contacts

Employer Reaches Out/ We reach out

Assess Relationship

- Is there already a contact on campus?
- Are there additional Opportunities?

- College Central Network
- Personal notes

Document



Data collection



Intentionally communicate with JPC or CC