

K-12 STRONG WORKFORCE PROGRAM KEY TALENT TEAM

K-12 PATHWAY COORDINATOR RESPONSIBILITIES

1

Act as **point of contact** & work with K-12 and community college Career Technical Education (CTE) programs with the intent of building & strengthening K-14 pathways, and respond to regional workforce needs.

2

Provide **technical assistance** to inform the development and provide resources to support K-12 CTE curriculum that aligns with community college CTE programs.

3

Facilitate the use of data to **identify gaps** in K-14 CTE Career Pathways, and makes recommendations for improvement.

4

Inform & **support the development & implementation of college and career exploration.**

5

Support student **postsecondary transitions and completion.** Facilitates and guides the collaboration between local education agencies and community colleges (i.e. dual enrollment, articulation).

6

Provide **technical assistance** to inform the development of Work-Based Learning opportunities for K-12 students.

[Find your regional K-12 Pathway Coordinator HERE](#)



POWERED BY
California Community Colleges

K-12 STRONG WORKFORCE PROGRAM KEY TALENT TEAM

K-14 TECHNICAL ASSISTANT PROVIDER RESPONSIBILITIES

1

Provide **leadership, guidance and technical assistance** to the region related to K-12 Strong Workforce Program (K-12 SWP) and Career Technical Education Incentive Grant (CTEIG).

2

Assume **responsibility for and support a regional needs assessment** of the status of implementation of K-12 CTE Programs & Pathways and develop and maintain a list of all CTEIG and SWP funded projects.

3

Conduct **professional development** activities for the K-12 Pathway Coordinators and other stakeholders in the region related to career pathways development, grant planning and writing, community coalition building etc.

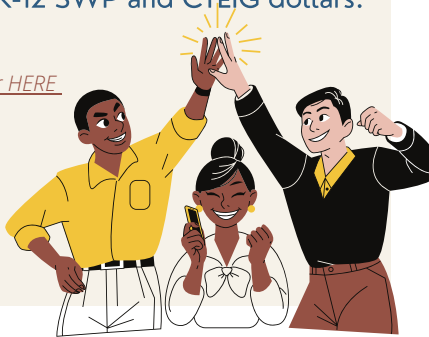
4

Coordinate **communication and collaboration** between K-12 and community college leadership to promote the alignment of K-14 career pathways within the region.

5

Ensure K-12 SWP **projects are spending funds properly** and facilitate the collection of data documenting that LEAs are meeting the K-12 SWP metrics for each project funded with K-12 SWP and CTEIG dollars.

[Find your regional K-14 Technical Assistant Provider HERE](#)



POWERED BY

California Community Colleges