

LEARN MORE. EARN MORE.

CAREER EDUCATION GUIDE 2022

COMMUNITY COLLEGES OF SAN DIEGO & IMPERIAL COUNTIES



DEAR EDUCATORS AND COUNSELORS

A MESSAGE FROM THE SAN DIEGO AND IMPERIAL COUNTIES REGIONAL STRONG WORKFORCE PROGRAM:

Preparing students to be college and career ready gives you the opportunity to help students identify their personal interests and values as they relate to career choices. Students need assistance in their career development journey (self-awareness, career awareness, career exploration, career preparation, career training) so they can make informed postsecondary and career decisions. Our hope is that you will use this Career Education Guide to help students align their interests and values with career pathways that will lead them to careers in high-wage, in-demand industry sectors. Students may already be interested in an industry sector or career pathway and the guide can give them information about the education and skills necessary to be successful.

Within the guide are embedded references to the RIASEC Holland Codes, or six interest areas. The abbreviation RIASEC refers to:

(R) Realistic

(I) Investigative

(A) Artistic

(S) Social

(E) Enterprising

(C) Conventional



We understand there are many career assessments available in a practitioner's toolbox. Since many career assessments organize by Holland Codes, we have used them in the guide to designate which interest categories correlate with each industry sector. As any skilled practitioner knows, these codes are not to be used in isolation but rather in consultation with a qualified counselor who can assist in interpreting career assessment results and take the time to understand a student's unique circumstances and needs.

In the back of the guide are helpful websites you can use to access free career exploration tools as well as career assessments. Understanding a student's interests will aid you in helping to plan a student's coursework to complete career pathways offered by your site or district. There is also a link to the San Diego and Imperial Counties Community Colleges Career Education website, careered.org, where information about training for in-demand careers can be found to help students with their postsecondary education plans.

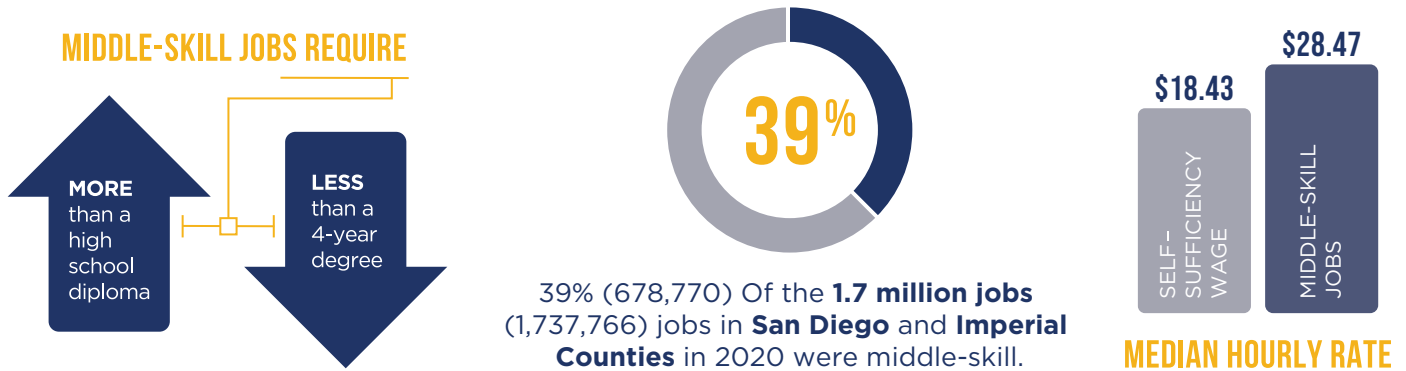
MIDDLE-SKILL JOBS DRIVE THE ECONOMY



Businesses need more qualified candidates to fill good-paying middle-skill positions. Career Education at the Community Colleges in San Diego & Imperial Counties holds the key to unlock these growing, in-demand jobs.

THE OPPORTUNITY

Middle-skill jobs are large and growing—and these jobs pay well.



THE REASON

Career Education gives students a wide variety of program choices at multiple campuses—at a fraction of the cost.

OVER 200 PROGRAMS AND 10 COMMUNITY COLLEGES

- MiraCosta College
- Cuyamaca College
- Palomar College
- San Diego City College
- San Diego Miramar College
- San Diego College of Continuing Education
- Grossmont College
- Southwestern College
- San Diego Mesa College
- Imperial Valley College

\$46
per credit
Community Colleges
are the best value.

THE JOBS

Career Education can quickly launch you into these careers.

70%

of graduates
ARE EMPLOYED
ONE YEAR AFTER
finishing their program

ADVANCE YOUR CAREER BY



BUILDING
YOUR SKILLS



EARNING A
CERTIFICATE



OBTAINING AN
ASSOCIATE DEGREE

IN-DEMAND SECTORS

- Advanced Manufacturing
- Advanced Transportation & Logistics
- Agriculture, Water, & Environmental Technologies
- Business & Entrepreneurship
- Education & Human Development
- Energy, Construction, & Utilities
- Hospitality & Tourism
- Health
- Information & Communication Technologies (ICT) & Digital Media
- Life Sciences & Biotechnology
- Public Safety & Retail

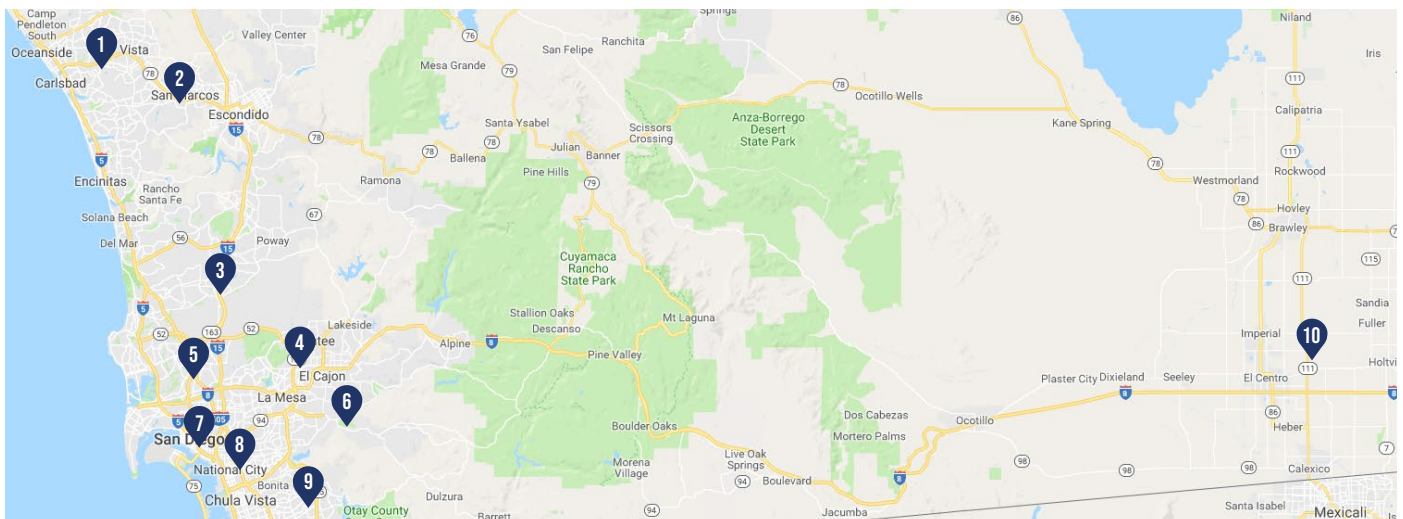
GET CONNECTED

STUDENTS

CAREER EDUCATION

TRAINING
WORK EXPERIENCE
JOB PLACEMENT

EMPLOYERS



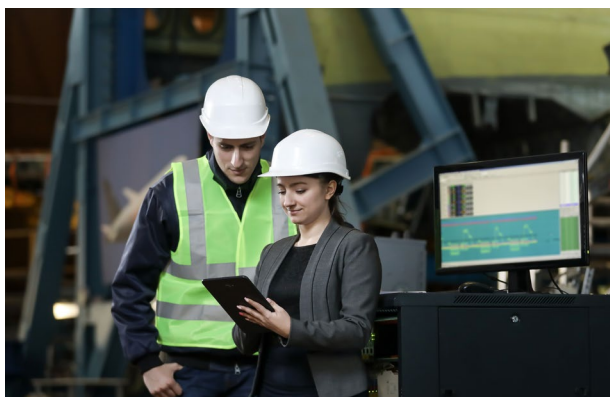
ADVANCED MANUFACTURING



For decades, the myth about manufacturing has been that it is dark, dirty, and dangerous but the truth is that modern manufacturing is safe, high-tech, and clean. The rise of automation, or “Industry 4.0,” is here, transforming factories across the globe using cutting-edge technologies, artificial intelligence, real-time data collection and collaborative robots in building a wide range of products to meet today’s needs and tomorrow’s challenges. High-tech manufacturing (or Advanced Manufacturing) jobs continue to grow, especially in the areas of additive manufacturing, lean manufacturing, robotics and automation, industrial internet of things, digital transformation, predictive maintenance, precision machining and engineering. These changes highlight an increased importance of diversified talent, especially women, who bring an important perspective and experience to a shifting industry.

Because robots and automation take care of the repetitive work, today’s manufacturing employees have more challenging and interesting job assignments. Employers in this sector look for technicians, technologists and engineers who are both at ease in the mechanical world, and looking to take on the challenge of moving into a cyber-physical world by applying scientific and technical principles to manufacturing processes. In addition, women are critical to manufacturing’s future. Did you know that the former CEO of PepsiCo was a woman of color? And the current CEO and Chair of General Motors is also a female? Opportunities for advancement are plentiful as technological advancements make higher-skill jobs in product design, process engineering, operations, maintenance, and lab work more prevalent.

CAREER EDUCATION GUIDE



FAST FACTS*



92,660

people employed



1% (573)

5-year projected
job growth



3,239

businesses



8%

of the sector’s
employment in
California



\$100,281

average earnings
per job



8%

of the sector’s
businesses in
California

*Labor market data derived from EMSI 2021.03; QCEW, Non-QCEW, Self-Employed; 2020-2025 projections.



ADVANCED MANUFACTURING | JOBS & WAGES

The following table lists the **minimum** educational attainment that an individual needs to have in order to be qualified for the occupation. Wages listed for each occupation are based on 25th percentile wages, which represent wages for entry-level workers. Only occupations with median annual salaries of at least \$37,440 (i.e., living wage) and a labor market demand of at least 50 annual job openings are included in this list. Any job with "All Other" in the title is an occupation with highly specialized subsets; put differently, the title is written broadly to capture various emerging occupations.

HIGH SCHOOL DIPLOMA OR EQUIVALENT + ADDITIONAL TRAINING	Entry-level Hourly Rate (Salary)	R	I	A	S	E	C
Aircraft Structure, Surfaces, Rigging, and Systems Assemblers*	\$21 (\$44K)	●					●
Cabinetmakers and Bench Carpenters*	\$16 (\$33K)	●					●
Coating, Painting, and Spraying Machine Setters, Operators, and Tenders*	\$16 (\$33K)	●	●				●
Computer Numerically Controlled Tool Operators*	\$17 (\$35K)	●					●
First-Line Supervisors of Production and Operating Workers*	\$26 (\$54K)	●				●	●
Industrial Machinery Mechanics*	\$25 (\$52K)	●	●				●
Machinists*	\$17 (\$35K)	●	●				●
Maintenance and Repair Workers, General*	\$17 (\$35K)	●	●				●
Mixing and Blending Machine Setters, Operators, and Tenders*	\$16 (\$33K)	●	●				●
Printing Press Operators*	\$15 (\$31K)	●					●
Sheet Metal Workers*	\$24 (\$50K)	●					
Structural Iron and Steel Workers*	\$26 (\$54K)	●	●				●
Structural Metal Fabricators and Fitters*	\$18 (\$37K)	●					●
Welders, Cutters, Solderers, and Brazers*	\$20 (\$42K)	●	●				●
SOME COLLEGE OR POSTSECONDARY NON-DEGREE AWARD							
Aircraft Mechanics and Service Technicians*	\$29 (\$60K)	●	●				●
Computer, Automated Teller, and Office Machine Repairers*	\$16 (\$33K)	●	●				●
Electrical and Electronics Repairers, Commercial and Industrial Equipment*	\$27 (\$56K)	●	●				●
ASSOCIATE DEGREE							
Calibration Technologists and Technicians and Engineering Technologists and Technicians, Except Drafters, All Other*+	\$26 (\$54K)						
Civil Engineering Technologists and Technicians*	\$18 (\$37K)	●	●				●
Electrical and Electronic Engineering Technologists and Technicians*	\$26 (\$54K)	●	●				●
Industrial Engineering Technologists and Technicians*	\$27 (\$56K)	●	●				●
BACHELOR'S DEGREE OR HIGHER							
Aerospace Engineers	\$43 (\$89K)	●	●				
Civil Engineers	\$36 (\$75K)	●	●				●
Computer Hardware Engineers	\$49 (\$102K)	●	●				●
Electrical Engineers	\$38 (\$79K)	●	●				
Electronics Engineers, Except Computer	\$45 (\$94K)	●	●				
Engineers, All Other+	\$43 (\$89K)						
Industrial Engineers	\$36 (\$75K)		●			●	●
Industrial Production Managers*	\$42 (\$87K)					●	●
Mechanical Engineers	\$37 (\$77K)	●	●				●
Purchasing Managers*	\$50 (\$104K)					●	●

*Nationally, 33% or more of workers currently employed in this occupation have an associate degree or less.
 + These occupations represent a wide range of characteristics and therefore do not have RIASEC details.



ADVANCED TRANSPORTATION & LOGISTICS



The Advanced Transportation & Logistics sector is responsible for ensuring that people and things get to the right place, at the right time, for the right price. Using cutting-edge technologies and processes, people in this sector are called on to move people and products from point A to point B by air, land, and sea. It takes people with all different talents, skills, backgrounds, and training to keep things moving. Areas of projected market growth include the use of Global Positioning Systems (GPS), Geographic Information Systems (GIS), and Radio Frequency Identification (RFID), developments in rocket technology, drones, hydrogen fuel-cell technology, autonomy, connected vehicles, and electric vehicles (light, medium, and heavy-duty). As vehicle components and repair techniques become increasingly sophisticated, this sector will continuously need transportation professionals. Because of the significant role that transportation plays in our personal and professional lives, there is a wide range of occupations in the sector, from technical to managerial positions.

CAREER EDUCATION GUIDE



FAST FACTS*



59,279

people employed



2% (1,292)

5-year projected
job growth



4,555

businesses



6%

of the sector's
employment in
California



\$65,649

average earnings
per job



7%

of the sector's
businesses in
California

*Labor market data derived from EMSI 2021.03; QCEW, Non-QCEW, Self-Employed; 2020-2025 projections.



ADVANCED TRANSPORTATION & LOGISTICS | JOBS & WAGES

The following table lists the **minimum** educational attainment that an individual needs to have in order to be qualified for the occupation. Wages listed for each occupation are based on 25th percentile wages, which represent wages for entry-level workers. Only occupations with median annual salaries of at least \$37,440 and a labor market demand of at least 50 annual job openings are included in this list. Any job with “All Other” in the title is an occupation with highly specialized subsets; put differently, the title is written broadly to capture various emerging occupations.

NO FORMAL EDUCATIONAL CREDENTIAL + ADDITIONAL TRAINING	Entry-level Hourly Rate (Salary)	R	I	A	S	E	C
Industrial Truck and Tractor Operators*	\$15 (\$31K)	●					●
Motor Vehicle Operators, All Other*+	\$13 (\$27K)						
Sailors and Marine Oilers*	\$17 (\$35K)	●					●
HIGH SCHOOL DIPLOMA OR EQUIVALENT + ADDITIONAL TRAINING							
Automotive Body and Related Repairers*	\$17 (\$35K)	●					
Bus and Truck Mechanics and Diesel Engine Specialists*	\$23 (\$48K)	●					●
Bus Drivers, Transit and Intercity*	\$18 (\$37K)	●			●		
Cargo and Freight Agents*	\$15 (\$31K)	●				●	●
Commercial Pilots	\$27 (\$56K)	●	●			●	
Driver/Sales Workers*	\$15 (\$31K)	●				●	
First-Line Supervisors of Mechanics, Installers, and Repairers*	\$27 (\$56K)	●				●	●
First-line Supervisors of Transportation and Material Moving Workers, Except Aircraft Cargo Handling Supervisors*	\$20 (\$42K)	●				●	●
Flight Attendants*	\$22 (\$46K)				●	●	●
Light Truck Drivers*	\$16 (\$33K)	●					●
Mobile Heavy Equipment Mechanics, Except Engines*	\$26 (\$54K)	●					●
Production, Planning, and Expediting Clerks*	\$20 (\$42K)					●	●
Transportation, Storage, and Distribution Managers*	\$35 (\$73K)	●				●	●
SOME COLLEGE OR POSTSECONDARY NON-DEGREE AWARD							
Automotive Service Technicians and Mechanics*	\$15 (\$31K)	●	●				●
Captains, Mates, and Pilots of Water Vessels*	\$21 (\$44K)	●				●	●
Heavy and Tractor-Trailer Truck Drivers*	\$17 (\$35K)	●					●
ASSOCIATE DEGREE							
Air Traffic Controllers*	\$63 (\$131K)					●	●
Avionics Technicians*	\$33 (\$69K)	●	●				●
BACHELOR'S DEGREE OR HIGHER							
Airline Pilots, Copilots, and Flight Engineers	\$50 (\$104K)	●	●				●
Buyers and Purchasing Agents*+	\$27 (\$56K)						
Logisticians*	\$31 (\$64K)					●	●

*Nationally, 33% or more of workers currently employed in this occupation have an associate degree or less.
 + These occupations represent a wide range of characteristics and therefore do not have RIASEC details.

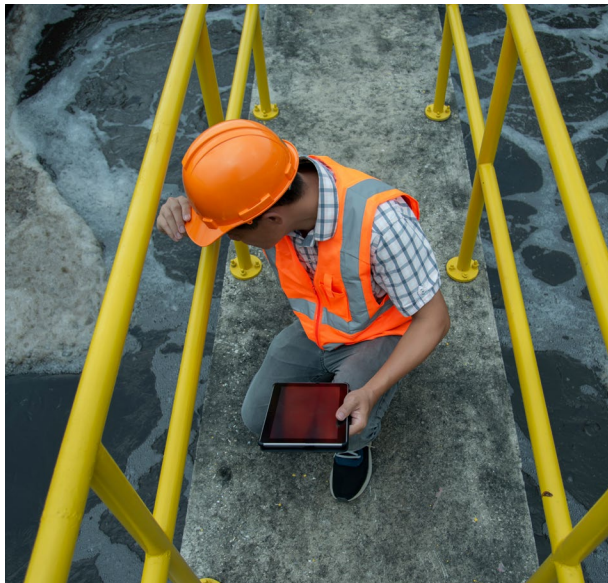


AGRICULTURE, WATER, & ENVIRONMENTAL TECHNOLOGIES



As California's population continues to grow, the state's agricultural, water and environmental resources are more important than ever. Agriculture alone is a \$49 billion-dollar industry in California, making our state the most prolific agricultural producer in the U.S. To meet the growing demand for these resources, companies are rapidly adopting new technologies and sustainable practices, and need workers to drive improvements in the sector. Careers in this sector range from turf management at municipal golf courses to research in biological sciences. Employees may work in a lab, on a farm, ranch, dairy, orchard, greenhouse, plant nursery, or in a veterinary office.

CAREER EDUCATION GUIDE



FAST FACTS*



26,492

people employed



5% (1,258)

5-year projected job growth



1,750

businesses



4%

of the sector's employment in California



\$64,090

average earnings per job



6%

of the sector's businesses in California

*Labor market data derived from EMSI 2021.03; QCEW, Non-QCEW, Self-Employed; 2020-2025 projections.



AGRICULTURE, WATER, & ENVIRONMENTAL TECHNOLOGIES | JOBS & WAGES

The following table lists the **minimum** educational attainment that an individual needs to have in order to be qualified for the occupation. Wages listed for each occupation are based on 25th percentile wages, which represent wages for entry-level workers. Only occupations with median annual salaries of at least \$37,440 (i.e., living wage) and a labor market demand of at least 10 annual job openings are included in this list. Any job with “All Other” in the title is an occupation with highly specialized subsets; put differently, the title is written broadly to capture various emerging occupations.

NO FORMAL EDUCATIONAL CREDENTIAL + ADDITIONAL TRAINING	Entry-level Hourly Rate (Salary)	R	I	A	S	E	C
Fishing and Hunting Workers*	\$14 (\$29K)	●	●			●	
Grounds Maintenance Workers, All Other*	\$15 (\$31K)						
HIGH SCHOOL DIPLOMA OR EQUIVALENT + ADDITIONAL TRAINING							
Earth Drillers, Except Oil and Gas; and Explosives Workers, Ordnance Handling Experts, and Blasters*	\$15 (\$31K)	●	●				●
Excavating and Loading Machine and Dragline Operators, Surface Mining*	\$20 (\$42K)	●					
Farmers, Ranchers, and Other Agricultural Managers*	\$16 (\$33K)	●				●	●
First-Line Supervisors of Farming, Fishing, and Forestry Workers*	\$19 (\$40K)	●				●	●
First-Line Supervisors of Landscaping, Lawn Service, and Groundskeeping Workers*	\$17 (\$35K)	●				●	●
Pest Control Workers*	\$20 (\$42K)	●					●
Stationary Engineers and Boiler Operators*	\$34 (\$71K)	●	●				●
Tree Trimmers and Pruners*	\$18 (\$37K)	●					
Water and Wastewater Treatment Plant and System Operators*	\$28 (\$58K)	●					●
ASSOCIATE DEGREE							
Agricultural and Food Science Technicians*	\$20 (\$42K)	●	●				●
Environmental Engineering Technologists and Technicians*	\$25 (\$52K)	●	●				●
Environmental Science and Protection Technicians, Including Health*	\$19 (\$40K)	●	●				●
Forest and Conservation Technicians*	\$17 (\$35K)	●	●			●	
Veterinary Technologists and Technicians*	\$19 (\$40K)	●	●				
BACHELOR'S DEGREE OR HIGHER							
Agricultural Inspectors*	\$18 (\$37K)	●	●				●
Environmental Engineers	\$34 (\$71K)	●	●				●
Environmental Scientists and Specialists, Including Health	\$30 (\$62K)	●	●				●
Geoscientists, Except Hydrologists and Geographers	\$34 (\$71K)	●	●				
Hydrologists	\$38 (\$79K)	●	●				
Physical Scientists, All Other+	\$41 (\$85K)						
Soil and Plant Scientists	\$28 (\$58K)	●	●				
Veterinarians	\$44 (\$92K)	●	●				

*Nationally, 33% or more of workers currently employed in this occupation have an associate degree or less.
 + These occupations represent a wide range of characteristics and therefore do not have RIASEC details.



BUSINESS & ENTREPRENEURSHIP

Regardless of the industry, every company needs people to account for finances, manage personnel, and sell products. Persons trained in sectors such as business, management, marketing, sales, and financial services (e.g., accounting, banking, investing) will find that their skills are highly marketable. Individuals interested in running their own businesses must master financial literacy and develop skills in mathematics, organization, time management, customer service, and communication. Within this sector, professionals are responsible for maximizing the experiences of customers, generating digital sales and traffic, managing personnel, and developing brands and products. Advances in technology, as well as market globalization and the expansion of banking and investment institutions around the world, will continue to create exciting and challenging career opportunities in this sector for the foreseeable future.



CAREER EDUCATION GUIDE



FAST FACTS*



294,010

people employed



1% (4,240)

5-year projected
job growth



29,027

businesses



9%

of the sector's
employment in
California



\$85,684

average earnings
per job



10%

of the sector's
businesses in
California

*Labor market data derived from EMSI 2021.03; QCEW, Non-QCEW, Self-Employed; 2020-2025 projections.



BUSINESS & ENTREPRENEURSHIP | JOBS & WAGES

The following table lists the **minimum** educational attainment that an individual needs to have in order to be qualified for the occupation. Wages listed for each occupation are based on 25th percentile wages, which represent wages for entry-level workers. Only occupations with median annual salaries of at least \$37,440 (i.e., living wage) and a labor market demand of at least 90 annual job openings are included in this list. Any job with “All Other” in the title is an occupation with highly specialized subsets; put differently, the title is written broadly to capture various emerging occupations.

HIGH SCHOOL DIPLOMA OR EQUIVALENT + ADDITIONAL TRAINING	Entry-level Hourly Rate (Salary)	R	I	A	S	E	C
Advertising Sales Agents*	\$17 (\$35K)			●		●	●
Bill and Account Collectors*	\$18 (\$37K)					●	●
Billing and Posting Clerks*	\$17 (\$35K)				●	●	●
Claims Adjusters, Examiners, and Investigators*	\$28 (\$58K)	●				●	●
Customer Service Representatives*	\$16 (\$33K)				●	●	●
Executive Secretaries and Executive Administrative Assistants*	\$25 (\$52K)					●	●
First-Line Supervisors of Office and Administrative Support Workers*	\$23 (\$48K)				●	●	●
Information and Record Clerks, All Other*+	\$15 (\$31K)						
Insurance Claims and Policy Processing Clerks*	\$17 (\$35K)				●	●	●
Insurance Sales Agents*	\$19 (\$40K)				●	●	●
Legal Secretaries and Administrative Assistants*	\$21 (\$44K)					●	●
Loan Interviewers and Clerks*	\$17 (\$35K)					●	●
Office and Administrative Support Workers, All Other*+	\$16 (\$33K)						
Payroll and Timekeeping Clerks*	\$22 (\$46K)					●	●
Property, Real Estate, and Community Association Managers*	\$22 (\$46K)					●	●
Real Estate Brokers*	\$26 (\$54K)					●	●
Real Estate Sales Agents*	\$18 (\$37K)					●	●
SOME COLLEGE OR POSTSECONDARY NON-DEGREE AWARD							
Bookkeeping, Accounting, and Auditing Clerks*	\$19 (\$40K)					●	●
ASSOCIATE DEGREE							
Human Resources Assistants, Except Payroll and Timekeeping*	\$19 (\$40K)				●	●	●
BACHELOR'S DEGREE OR HIGHER							
Accountants and Auditors	\$28 (\$58K)	●				●	●
Administrative Services and Facilities Managers*	\$32 (\$67K)					●	●
Buyers and Purchasing Agents*+	\$27 (\$56K)						
Chief Executives	\$50 (\$104K)					●	●
Compliance Officers*	\$28 (\$58K)				●	●	●
Financial and Investment Analysts, Financial Risk Specialists, and Financial Specialists, All Other+	\$29 (\$60K)						
Financial Managers*	\$45 (\$94K)				●	●	●
Fundraisers	\$19 (\$40K)			●		●	●
Human Resources Managers	\$48 (\$100K)				●	●	●
Human Resources Specialists*	\$26 (\$54K)				●	●	●
Lawyers	\$41 (\$85K)	●				●	
Loan Officers*	\$20 (\$42K)				●	●	●
Management Analysts	\$30 (\$62K)	●				●	●
Market Research Analysts and Marketing Specialists	\$22 (\$46K)	●				●	●
Marketing Managers	\$43 (\$89K)				●	●	●
Personal Financial Advisors	\$35 (\$73K)				●	●	●
Training and Development Specialists*	\$28 (\$58K)			●	●		●

*Nationally, 33% or more of workers currently employed in this occupation have an associate degree or less.

+ These occupations represent a wide range of characteristics and therefore do not have RIASEC details.



EDUCATION & HUMAN DEVELOPMENT

Education and Human Development encompasses a wide range of disciplines and career pathways, including early care and education, preschool and childcare programs, elementary and secondary education, special education, educational administration, school psychology, adaptive physical education, speech and language therapy, occupational therapy, child and family advocacy, child life specialists, counseling and social work. Employment in the human services sector is broadly defined and multidisciplinary but has at its core a focus on human relationships, prevention and remediation of problems, and a commitment to improving overall quality of life.



CAREER EDUCATION GUIDE



FAST FACTS*



91,174

people employed



17% (15,311)

5-year projected
job growth



27,457

businesses



7%

of the sector's
employment in
California



\$41,287

average earnings
per job



5%

of the sector's
businesses in
California

*Labor market data derived from EMSI 2021.03; QCEW, Non-QCEW, Self-Employed; 2020-2025 projections.



EDUCATION & HUMAN DEVELOPMENT | JOBS & WAGES

The following table lists the **minimum** educational attainment that an individual needs to have in order to be qualified for the occupation. Wages listed for each occupation are based on 25th percentile wages, which represent wages for entry-level workers. Only occupations with median annual salaries of at least \$37,440 (i.e., living wage) and a labor market demand of at least 10 annual job openings are included in this list. Any job with “All Other” in the title is an occupation with highly specialized subsets; put differently, the title is written broadly to capture various emerging occupations.

HIGH SCHOOL DIPLOMA OR EQUIVALENT + ADDITIONAL TRAINING	Entry-level Hourly Rate (Salary)	R	I	A	S	E	C
Self-Enrichment Teachers*	\$15 (\$31K)			●	●	●	
BACHELOR’S DEGREE OR HIGHER							
Adult Basic Education, Adult Secondary Education, and English as a Second Language Instructors*	\$30 (\$62K)			●	●	●	
Child, Family, and School Social Workers	\$20 (\$42K)				●	●	
Clinical, Counseling, and School Psychologists	\$40 (\$83K)		●	●	●		
Community and Social Service Specialists, All Other*+	\$17 (\$35K)						
Education Administrators, All Other+	\$30 (\$62K)						
Education Administrators, Kindergarten through Secondary	\$53 (\$110K)				●	●	●
Education Administrators, Postsecondary	\$44 (\$92K)				●	●	●
Education and Childcare Administrators, Preschool and Daycare	\$20 (\$42K)				●	●	●
Educational, Guidance, and Career Counselors and Advisors	\$24 (\$50K)				●		
Elementary School Teachers, Except Special Education	\$26 (\$54K)			●	●		●
Health Education Specialists*	\$17 (\$35K)				●	●	
Instructional Coordinators	\$19 (\$40K)		●		●	●	
Kindergarten Teachers, Except Special Education*	\$22 (\$46K)			●	●		
Librarians and Media Collections Specialists	\$28 (\$58K)	●			●		●
Middle School Teachers, Except Special and Career/Technical Education	\$27 (\$56K)			●	●		
Postsecondary Teachers	\$32 (\$67K)		●	●	●		
Secondary School Teachers, Except Special and Career/Technical Education	\$34 (\$71K)			●	●	●	
Special Education Teachers, All Other+	\$33 (\$69K)						
Special Education Teachers, Kindergarten and Elementary School+	\$20 (\$42K)						
Special Education Teachers, Secondary School	\$15 (\$31K)		●		●		
Tutors and Teachers and Instructors, All Other+	\$16 (\$33K)						

*Nationally, 33% or more of workers currently employed in this occupation have an associate degree or less.
 + These occupations represent a wide range of characteristics and therefore do not have RIASEC details.



ENERGY, CONSTRUCTION, & UTILITIES

The United States is not only one of the world's leading suppliers of energy, it is also one of its largest consumers. With the increase of public and governmental interest in renewable energy, clean energy generation, and energy efficiency, job opportunities are growing rapidly, especially with the existing workforce expected to retire in the upcoming years. Firms in this sector need people who can work with their heads and hands to design and build office buildings, hospitals, shopping malls, and housing communities. Once architects come up with a design, it takes a team of skilled people such as plumbers, electricians, masons, roofers, framers and more to turn it into a finished structure. Craftsmen in this industry sector need a strong math background, good technology skills, and solid on-the-job experience.



CAREER EDUCATION GUIDE



FAST FACTS*



135,477
people employed



3% (4,440)
5-year projected
job growth



10,603
businesses



9%
of the sector's
employment in
California



\$89,316
average earnings
per job



10%
of the sector's
businesses in
California

*Labor market data derived from EMSI 2021.03; QCEW, Non-QCEW, Self-Employed; 2020-2025 projections.



ENERGY, CONSTRUCTION, & UTILITIES | JOBS & WAGES

The following table lists the **minimum** educational attainment that an individual needs to have in order to be qualified for the occupation. Wages listed for each occupation are based on 25th percentile wages, which represent wages for entry-level workers. Only occupations with median annual salaries of at least \$37,440 (i.e., living wage) and a labor market demand of at least 50 annual job openings are included in this list. Any job with "All Other" in the title is an occupation with highly specialized subsets; put differently, the title is written broadly to capture various emerging occupations.

NO FORMAL EDUCATIONAL CREDENTIAL + ADDITIONAL TRAINING	Entry-level Hourly Rate (Salary)	R	I	A	S	E	C
Carpet Installers*	\$16 (\$33K)	●				●	
Cement Masons and Concrete Finishers*	\$24 (\$50K)	●				●	
Construction Laborers*	\$15 (\$31K)	●					●
Drywall and Ceiling Tile Installers*	\$21 (\$44K)	●					●
Floor Layers, Except Carpet, Wood, and Hard Tiles*	\$23 (\$48K)	●					●
Painters, Construction and Maintenance*	\$16 (\$33K)	●					●
Plasterers and Stucco Masons*	\$21 (\$44K)	●					
Roofers*	\$18 (\$37K)	●					●
Tile and Stone Setters*	\$17 (\$35K)	●		●			●
HIGH SCHOOL DIPLOMA OR EQUIVALENT + ADDITIONAL TRAINING							
Carpenters*	\$19 (\$40K)	●	●				●
Construction and Building Inspectors*	\$28 (\$58K)	●	●				●
Control and Valve Installers and Repairers, Except Mechanical Door*	\$28 (\$58K)	●	●				●
Electricians*	\$22 (\$46K)	●	●				●
First-Line Supervisors of Construction Trades and Extraction Workers*	\$29 (\$60K)	●				●	●
Glaziers*	\$28 (\$58K)	●					●
Hazardous Materials Removal Workers*	\$17 (\$35K)	●					●
Highway Maintenance Workers*	\$19 (\$40K)	●					●
Installation, Maintenance, and Repair Workers, All Other*+	\$16 (\$33K)						
Miscellaneous Construction and Related Workers*+	\$17 (\$35K)						
Operating Engineers and Other Construction Equipment Operators*	\$26 (\$54K)	●	●				●
Paving, Surfacing, and Tamping Equipment Operators*	\$22 (\$46K)	●					●
Plumbers, Pipefitters, and Steamfitters*	\$21 (\$44K)	●	●				●
Sales Representatives of Services, Except Advertising, Insurance, Financial Services, and Travel*+	\$19 (\$40K)						
Security and Fire Alarm Systems Installers*	\$19 (\$40K)	●					●
Solar Photovoltaic Installers*	\$21 (\$44K)	●					●
SOME COLLEGE OR POSTSECONDARY NON-DEGREE AWARD							
Heating, Air Conditioning, and Refrigeration Mechanics and Installers*	\$24 (\$50K)	●	●				●
ASSOCIATE DEGREE							
Architectural and Civil Drafters*	\$26 (\$54K)	●		●			●
Electrical and Electronic Engineering Technologists and Technicians*	\$28 (\$58K)	●	●				●
BACHELOR'S DEGREE OR HIGHER							
Architects, Except Landscape and Naval	\$29 (\$60K)		●	●			
Architectural and Engineering Managers	\$66 (\$137K)	●	●			●	
Construction Managers*	\$29 (\$60K)	●				●	●

*Nationally, 33% or more of workers currently employed in this occupation have an associate degree or less.
 + These occupations represent a wide range of characteristics and therefore do not have RIASEC details.



HEALTH

Students interested in making a difference in people’s lives and seeking to secure “recession-resilient” careers should consider exploring health-related occupations. It is projected that jobs in the health field will continue to increase due to the aging and growing population. The medical and health industry is one of the fastest growing economic industry sectors in California, employing nearly 1.7 million professionals across a wide range of well-paying career opportunities. Surprisingly, doctors and nurses comprise less than 40% of health professionals, while allied health professionals make up an estimated 60% of the national health care workforce. While many of the careers in this sector require advanced-level preparation, there are plenty of options available for students of various aptitudes, interests, abilities and degree levels.

There are over 30 health care occupations and different specialties including nursing, research, diagnostic services, support services, physical therapy, and health informatics (using cutting-edge technology to store and retrieve medical data). While significant expansion will continue across all occupational segments, the Health Workforce Initiative notes especially strong growth opportunities for Certified Nursing Assistants, Home Health Aides, Licensed Vocational Nurses and Registered Nurses.



CAREER EDUCATION GUIDE



FAST FACTS*



139,195
people employed



12% (16,440)
5-year projected
job growth



8,721
businesses



8%
of the sector’s
employment in
California



\$84,335
average earnings
per job



9%
of the sector’s
businesses in
California

*Labor market data derived from EMSI 2021.03; QCEW, Non-QCEW, Self-Employed; 2020-2025 projections.



HEALTH | JOBS & WAGES

The following table lists the **minimum** educational attainment that an individual needs to have in order to be qualified for the occupation. Wages listed for each occupation are based on 25th percentile wages, which represent wages for entry-level workers. Only occupations with median annual salaries of at least \$37,440 (i.e., living wage)—with some exceptions—and a labor market demand of at least 50 annual job openings are included in this list. Any job with “All Other” in the title is an occupation with highly specialized subsets; put differently, the title is written broadly to capture various emerging occupations.

HIGH SCHOOL DIPLOMA OR EQUIVALENT + ADDITIONAL TRAINING	Entry-level Hourly Rate (Salary)	R	I	A	S	E	C
Community Health Workers*	\$18 (\$37K)		●		●	●	
Healthcare Support Workers, All Other**	\$20 (\$42K)						
Medical Secretaries and Administrative Assistants*	\$17 (\$35K)				●		●
Miscellaneous First-Line Supervisors, Protective Service Workers**	\$19 (\$40K)						
Office Clerks, General*	\$15 (\$31K)	●				●	●
Ophthalmic Laboratory Technicians*	\$17 (\$35K)	●					●
SOME COLLEGE OR POSTSECONDARY NON-DEGREE AWARD							
Dental Assistants*	\$17 (\$35K)	●			●		●
Health Information Technologists, Medical Registrars, Surgical Assistants, and Healthcare Practitioners and Technical Workers	\$16 (\$33K)	●			●		●
Licensed Practical and Licensed Vocational Nurses*	\$27 (\$56K)	●			●		
Medical Assistants*	\$16 (\$33K)	●			●		●
Medical Dosimetrists, Medical Records Specialists, and Health Technologists and Technicians, All Other**	\$18 (\$37K)						
Phlebotomists*	\$21 (\$44K)	●	●				●
Psychiatric Technicians*	\$23 (\$48K)	●			●	●	
Surgical Technologists*	\$26 (\$54K)	●			●		●
ASSOCIATE DEGREE							
Dental Hygienists*	\$45 (\$94K)	●			●		●
Occupational Therapy Assistants*	\$30 (\$62K)	●			●		
Physical Therapist Assistants*	\$29 (\$60K)	●	●		●		
Radiologic Technologists and Technicians*	\$30 (\$62K)	●			●		●
Respiratory Therapists*	\$33 (\$69K)	●	●		●		
BACHELOR'S DEGREE OR HIGHER							
Clinical Laboratory Technologists and Technicians*	\$20 (\$42K)	●	●				●
Dentists, General	\$37 (\$77K)	●	●		●		
Dietitians and Nutritionists	\$33 (\$69K)		●		●		
Healthcare Social Workers*	\$24 (\$50K)		●		●		
Marriage and Family Therapists	\$18 (\$37K)		●	●	●		
Medical and Health Services Managers*	\$43 (\$89K)				●	●	●
Medical Scientists, Except Epidemiologists	\$35 (\$73K)	●	●	●			
Mental Health and Substance Abuse Social Workers	\$18 (\$37K)		●	●	●		
Nurse Practitioners	\$54 (\$112K)	●	●		●		
Occupational Health and Safety Specialists*	\$35 (\$73K)		●				●
Occupational Therapists	\$23 (\$48K)		●		●		
Pharmacists	\$64 (\$133K)		●		●		●
Physical Therapists	\$37 (\$77K)	●	●		●		
Physician Assistants	\$46 (\$96K)	●	●		●		
Registered Nurses*	\$43 (\$89K)		●		●		●
Social Workers, All Other+	\$20 (\$42K)						
Substance Abuse, Behavioral Disorder, and Mental Health Counselors	\$17 (\$35K)		●	●	●		

*Nationally, 33% or more of workers currently employed in this occupation have an associate degree or less.

+ These occupations represent a wide range of characteristics and therefore do not have RIASEC details.



ICT & DIGITAL MEDIA

In California alone, this sector accounts for 12.6% of the state's economy, while providing more than one million jobs across the state. As companies continue to use new and emerging technologies, the demand for technologically savvy and creative professionals will continue to grow. Jobs in the ICT & Digital Media sector tend to be constantly changing and require a combination of imaginative and hands-on skills. Professionals in this sector must be able to work both independently and collaboratively.

ICT & Digital Media students learn about the design, development, maintenance, and management of hardware, software, multimedia, and systems integration services. Because of the central role that technology plays in all industries, ICT professionals are and will continue to be in great demand in every sector of the economy. Specific areas of future growth are likely to surface in cloud computing, collection and storage of big data, and information security.



CAREER EDUCATION GUIDE



FAST FACTS*



60,885

people employed



5% (2,880)

5-year projected
job growth



4,544

businesses



6%

of the sector's
employment in
California



\$137,846

average earnings
per job



7%

of the sector's
businesses in
California

*Labor market data derived from EMSI 2021.03; QCEW, Non-QCEW, Self-Employed; 2020-2025 projections.



ICT & DIGITAL MEDIA | JOBS & WAGES

The following table lists the **minimum** educational attainment that an individual needs to have in order to be qualified for the occupation. Wages listed for each occupation are based on 25th percentile wages, which represent wages for entry-level workers. Only occupations with median annual salaries of at least \$37,440 (i.e., living wage) and a labor market demand of at least 50 annual job openings are included in this list. Any job with "All Other" in the title is an occupation with highly specialized subsets; put differently, the title is written broadly to capture various emerging occupations.

EDUCATIONAL ATTAINMENT	Entry-level Hourly Rate (Salary)	R	I	A	S	E	C
HIGH SCHOOL DIPLOMA OR EQUIVALENT + ADDITIONAL TRAINING							
Electrical Power-Line Installers and Repairers*	\$40 (\$83K)	●	●				●
Photographers*	\$14 (\$29K)	●		●			
Surveying and Mapping Technicians*	\$25 (\$52K)	●	●				●
Telecommunications Line Installers and Repairers*	\$26 (\$54K)	●				●	
Word Processors and Typists*	\$19 (\$40K)					●	●
SOME COLLEGE OR POSTSECONDARY NON-DEGREE AWARD							
Audio and Video Technicians*	\$17 (\$35K)	●	●				●
Computer User Support Specialists*	\$22 (\$46K)	●	●				●
Telecommunications Equipment Installers and Repairers, Except Line Installers*	\$28 (\$58K)	●	●				●
ASSOCIATE DEGREE							
Computer Network Support Specialists*	\$24 (\$50K)	●				●	●
Web Developers and Digital Interface Designers CIR Web Developers	\$22 (\$46K)						
BACHELOR'S DEGREE OR HIGHER							
Computer and Information Systems Managers	\$63 (\$131K)		●			●	●
Computer Network Architects*	\$39 (\$81K)		●			●	●
Computer Occupations, All Other*+	\$34 (\$71K)						
Computer Programmers	\$35 (\$73K)		●				●
Computer Systems Analysts	\$33 (\$69K)	●	●				●
Data Scientists and Mathematical Science Occupations, All Other+	\$39 (\$81K)						
Database Administrators and Architects	\$36 (\$75K)		●			●	●
Editors	\$18 (\$37K)			●		●	●
Graphic Designers*	\$18 (\$37K)	●		●		●	
Information Security Analysts	\$44 (\$92K)	●	●				●
Network and Computer Systems Administrators*	\$36 (\$75K)	●	●				●
Operations Research Analysts	\$35 (\$73K)		●			●	●
Producers and Directors	\$16 (\$33K)			●	●	●	
Public Relations Specialists	\$25 (\$52K)			●	●	●	
Software Developers and Software Quality Assurance Analysts and Testers	\$45 (\$94K)	●	●				●
Special Effects Artists and Animators*	\$10 (\$21K)		●	●			
Technical Writers	\$29 (\$60K)		●	●			●
Writers and Authors	\$13 (\$27K)			●		●	

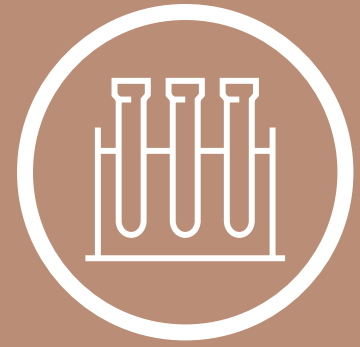
*Nationally, 33% or more of workers currently employed in this occupation have an associate degree or less.

+ These occupations represent a wide range of characteristics and therefore do not have RIASEC details.



LIFE SCIENCES & BIOTECHNOLOGY

This sector focuses on finding solutions for the world's great challenges in health care, agriculture, and sustainability. Firms include research, testing and medical laboratories that are engaged in the discovery, development and commercialization of new products. The Life Sciences & Biotechnology sector encompasses many segments, including pharmaceuticals, biomedical devices, M-Health (mobile health) or wireless health, agricultural and industrial biotechnology (e.g., biofuels, biodegradable materials), and bioscience-related distribution and trade. The Life Sciences & Biotechnology sector is an economic driver and job producer; for every job created in this sector, four other jobs are generated throughout San Diego County.



CAREER EDUCATION GUIDE



FAST FACTS*



68,890

people employed



6% (4,054)

5-year projected
job growth



2,280

businesses



16%

of the sector's
employment in
California



\$190,668

average earnings
per job



11%

of the sector's
businesses in
California

*Labor market data derived from EMSI 2021.03; QCEW, Non-QCEW, Self-Employed; 2020-2025 projections.



LIFE SCIENCES & BIOTECHNOLOGY | JOBS & WAGES

The following table lists the **minimum** educational attainment that an individual needs to have in order to be qualified for the occupation. Wages listed for each occupation are based on 25th percentile wages, which represent wages for entry-level workers. Only occupations with median annual salaries of at least \$37,440 (i.e., living wage) and a labor market demand of at least 10 annual job openings are included in this list. Any job with "All Other" in the title is an occupation with highly specialized subsets; put differently, the title is written broadly to capture various emerging occupations.

HIGH SCHOOL DIPLOMA OR EQUIVALENT + ADDITIONAL TRAINING	Entry-level Hourly Rate (Salary)	R	I	A	S	E	C
Chemical Equipment Operators and Tenders*	\$19 (\$40K)	●					●
Chemical Plant and System Operators*	\$20 (\$42K)	●					●
Inspectors, Testers, Sorters, Samplers, and Weighers*	\$18 (\$37K)	●					●
Medical Appliance Technicians*	\$14 (\$29K)	●	●		●		
ASSOCIATE DEGREE							
Chemical Technicians*	\$18 (\$37K)	●	●				●
Geological and Hydrologic Technicians*	\$24 (\$50K)						
Life, Physical, and Social Science Technicians, All Other*+	\$24 (\$50K)						
Medical Equipment Repairers*	\$19 (\$40K)	●	●				●
BACHELOR'S DEGREE OR HIGHER							
Anthropologists and Archeologists	\$29 (\$60K)	●	●	●			
Atmospheric and Space Scientists	\$38 (\$79K)	●	●				
Biochemists and Biophysicists	\$29 (\$60K)	●	●	●			
Bioengineers and Biomedical Engineers	\$32 (\$67K)	●	●				
Biological Scientists, All Other+	\$33 (\$69K)						
Biological Technicians*	\$18 (\$37K)	●	●				●
Chemical Engineers	\$42 (\$87K)	●	●				
Chemists	\$25 (\$52K)	●	●				●
Clinical Laboratory Technologists and Technicians*	\$20 (\$42K)	●	●				●
Conservation Scientists	\$34 (\$71K)	●	●			●	
Life Scientists, All Other+	\$43 (\$89K)						
Microbiologists	\$30 (\$62K)	●	●				
Natural Sciences Managers	\$67 (\$139K)		●			●	
Physicists	\$50 (\$104K)	●	●				
Social Science Research Assistants*	\$22 (\$46K)		●				●
Social Scientists and Related Workers, All Other+	\$34 (\$71K)						
Urban and Regional Planners	\$35 (\$73K)		●	●		●	

*Nationally, 33% or more of workers currently employed in this occupation have an associate degree or less.

+ These occupations represent a wide range of characteristics and therefore do not have RIASEC details.



PUBLIC SAFETY & GOVERNMENT



Public safety and government are always in need of qualified candidates. Many employers in this industry have a list of skills in demand which include communication skills, creativity, critical thinking, detail-oriented, leadership, multi-tasking, organizational skills, planning, positive disposition, problem-solving, and teamwork/collaboration. Public safety is also categorized as a recession-resilient job, which has annual openings at or above the regional average, a median hourly at or above the living wage for San Diego County and has less than six percent employment decline between 2007 and 2010.

However, public safety and government is not limited to only first responders. Pursuing a public safety and government job includes other career possibilities in related fields such as the security industry, law enforcement, custody & corrections (probation & parole), court systems, animal control, postal service, private investigation, public safety dispatch, to name a few.

CAREER EDUCATION GUIDE



FAST FACTS*



339,084

people employed



1% (2,387)

5-year projected
job growth



1,969

businesses



12%

of the sector's
employment in
California



\$96,622

average earnings
per job



5%

of the sector's
businesses in
California

*Labor market data derived from EMSI 2021.03; QCEW, Non-QCEW, Self-Employed; 2020-2025 projections.



PUBLIC SAFETY & GOVERNMENT | JOBS & WAGES

The following table lists the **minimum** educational attainment that an individual needs to have in order to be qualified for the occupation. Wages listed for each occupation are based on 25th percentile wages, which represent wages for entry-level workers. Only occupations with median annual salaries of at least \$37,440 (i.e., living wage) and a labor market demand of at least 10 annual job openings are included in this list. Any job with "All Other" in the title is an occupation with highly specialized subsets; put differently, the title is written broadly to capture various emerging occupations.

NO FORMAL EDUCATIONAL CREDENTIAL + ADDITIONAL TRAINING	Entry-level Hourly Rate (Salary)	R	I	A	S	E	C
Crossing Guards and Flaggers*	\$16 (\$33K)	●			●	●	
HIGH SCHOOL DIPLOMA OR EQUIVALENT + ADDITIONAL TRAINING							
Animal Control Workers*	\$25 (\$52K)	●			●		●
Correctional Officers and Jailers*	\$31 (\$64K)	●				●	●
Court, Municipal, and License Clerks*	\$18 (\$37K)				●	●	●
Detectives and Criminal Investigators*	\$47 (\$98K)		●			●	●
Dispatchers, Except Police, Fire, and Ambulance*	\$18 (\$37K)	●				●	●
Eligibility Interviewers, Government Programs*	\$21 (\$44K)				●	●	●
First-Line Supervisors of Correctional Officers*	\$45 (\$94K)	●				●	●
First-Line Supervisors of Police and Detectives*	\$58 (\$121K)				●	●	●
Gambling Surveillance Officers and Gambling Investigators*	\$16 (\$33K)	●				●	●
Police and Sheriffs Patrol Officers*	\$34 (\$71K)	●			●	●	
Postal Service Clerks*	\$21 (\$44K)	●					●
Postal Service Mail Carriers*	\$20 (\$42K)	●					●
Postal Service Mail Sorters, Processors, and Processing Machine Operators*	\$18 (\$37K)	●					●
Private Detectives and Investigators*	\$26 (\$54K)					●	●
Public Safety Telecommunicators*	\$25 (\$52K)	●				●	●
Transportation Security Screeners*	\$21 (\$44K)	●				●	●
SOME COLLEGE OR POSTSECONDARY NON-DEGREE AWARD							
Firefighters*	\$28 (\$58K)	●			●	●	
First-Line Supervisors of Firefighting and Prevention Workers*	\$43 (\$89K)	●			●	●	
Library Technicians*	\$17 (\$35K)				●	●	●
BACHELOR'S DEGREE OR HIGHER							
Cartographers and Photogrammetrists	\$29 (\$60K)	●	●				●
Economists	\$46 (\$96K)		●			●	●
Legislators	\$23 (\$48K)				●	●	
Probation Officers and Correctional Treatment Specialists	\$35 (\$73K)				●	●	●
Surveyors	\$38 (\$79K)	●	●				●

*Nationally, 33% or more of workers currently employed in this occupation have an associate degree or less.

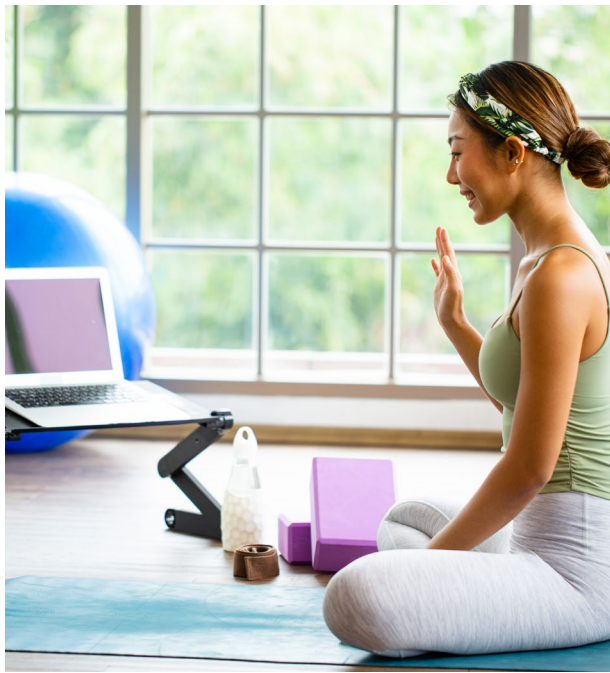


RETAIL, HOSPITALITY, & TOURISM

The Retail, Hospitality & Tourism sector is responsible for providing everything there is to offer in lodging, meetings and conventions, restaurants, shopping, travel and recreational activities. Career paths can be found in many professions in the hospitality industry, where the focus is people, service and guest satisfaction.



CAREER EDUCATION GUIDE



FAST FACTS*



312,652

people employed



-5% (-15,573)

5-year projected
job growth



20,062

businesses



9%

of the sector's
employment in
California



\$43,438

average earnings
per job



8%

of the sector's
businesses in
California

*Labor market data derived from EMSI 2021.03; QCEW, Non-QCEW, Self-Employed; 2020-2025 projections.



RETAIL, HOSPITALITY, & TOURISM | JOBS & WAGES

The following table lists the **minimum** educational attainment that an individual needs to have in order to be qualified for the occupation. Wages listed for each occupation are based on 25th percentile wages, which represent wages for entry-level workers. Only occupations with median annual salaries of at least \$37,440 (i.e., living wage) and a labor market demand of at least 50 annual job openings are included in this list. Any job with "All Other" in the title is an occupation with highly specialized subsets; put differently, the title is written broadly to capture various emerging occupations.

NO FORMAL EDUCATIONAL CREDENTIAL + ADDITIONAL TRAINING	Entry-level Hourly Rate (Salary)	R	I	A	S	E	C
Athletes and Sports Competitors*	\$14 (\$29K)	●				●	
Cooks, All Other*+	\$16 (\$33K)						
Dancers*	\$15 (\$31K)	●		●			
Miscellaneous Entertainers and Performers, Sports and Related Workers*+	\$15 (\$31K)						
Musicians and Singers*	\$14 (\$29K)			●	●	●	
HIGH SCHOOL DIPLOMA OR EQUIVALENT + ADDITIONAL TRAINING							
Chefs and Head Cooks*	\$19 (\$40K)	●		●		●	
Exercise Trainers and Group Fitness Instructors*	\$14 (\$29K)	●			●	●	
First-Line Supervisors of Gambling Services Workers*	\$18 (\$37K)	●				●	●
First-Line Supervisors of Non-Retail Sales Workers*	\$20 (\$42K)				●	●	●
First-Line Supervisors of Personal Service and Entertainment and Recreation Workers, Except Gambling Services*+	\$17 (\$35K)						
First-Line Supervisors of Retail Sales Workers*	\$16 (\$33K)				●	●	●
Food Service Managers*	\$18 (\$37K)	●				●	●
Reservation and Transportation Ticket Agents and Travel Clerks*	\$15 (\$31K)				●	●	●
Travel Agents*	\$17 (\$35K)					●	●
SOME COLLEGE OR POSTSECONDARY NON-DEGREE AWARD							
Actors*	\$21 (\$44K)			●		●	
BACHELOR'S DEGREE OR HIGHER							
Art Directors*	\$12 (\$25K)			●		●	
Coaches and Scouts*	\$17 (\$35K)	●			●	●	
Designers, All Other*+	\$15 (\$31K)						
General and Operations Managers*	\$38 (\$79K)				●	●	●
Interior Designers*	\$22 (\$46K)			●		●	
Meeting, Convention, and Event Planners*	\$18 (\$37K)				●	●	●
Music Directors and Composers	\$15 (\$31K)			●	●	●	
Personal Service Managers, All Other; Entertainment and Recreation Managers, Except Gambling; and Managers, All Other*+	\$29 (\$60K)						
Sales Representatives, Wholesale and Manufacturing, Technical and Scientific Products*	\$33 (\$69K)					●	●

*Nationally, 33% or more of workers currently employed in this occupation have an associate degree or less.

+ These occupations represent a wide range of characteristics and therefore do not have RIASEC details.



K-12 CROSSWALK

The crosswalk below shows alignment between the San Diego and Imperial Counties Community College’s in-demand industry sectors and the corresponding K12 industry sectors. To see more details about industry sectors and pathways alignment visit <https://myworkforceconnection.org>



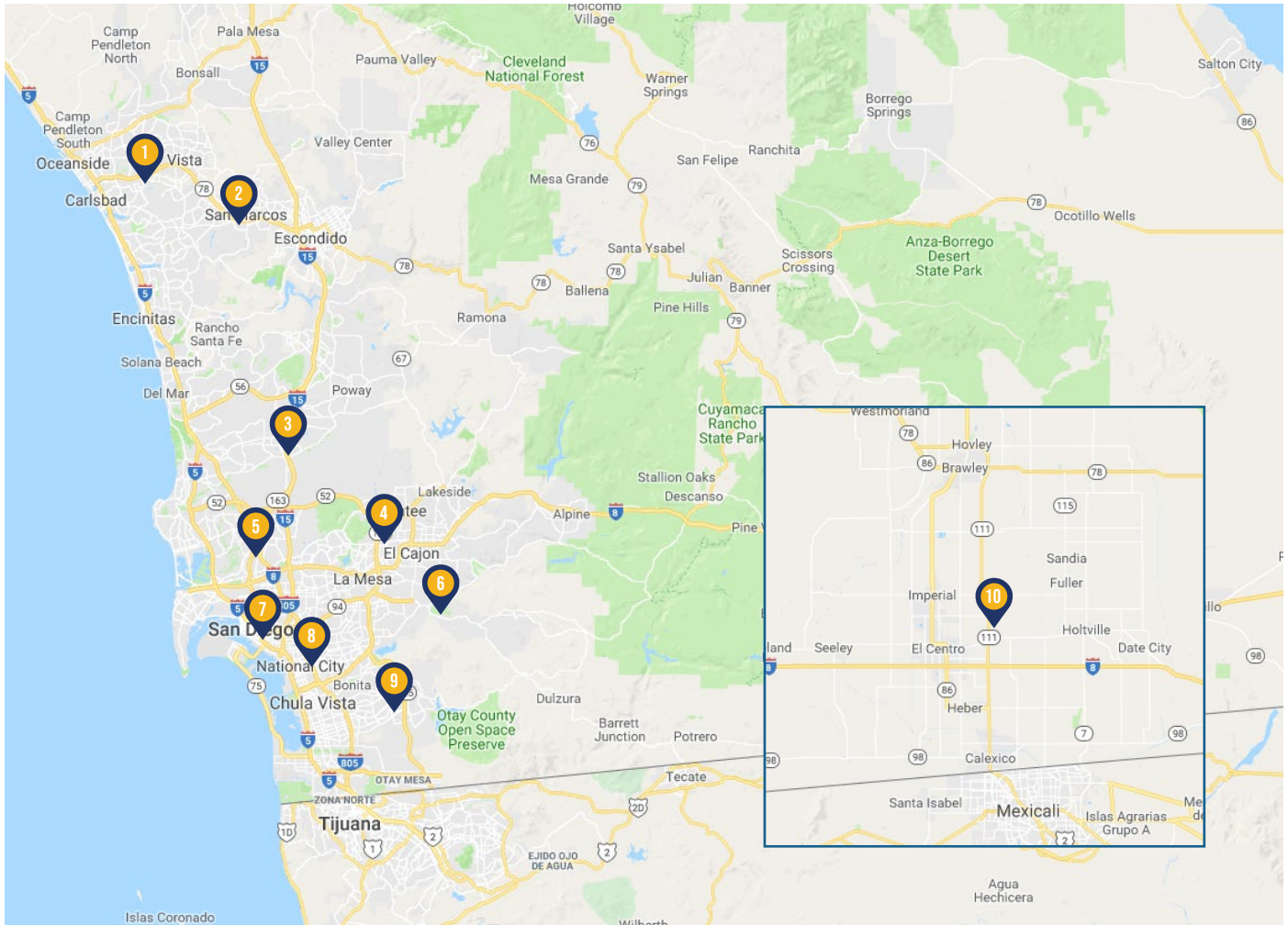
IN-DEMAND SECTORS

- Advanced Manufacturing
- Advanced Transportation & Logistics
- Agriculture, Water, & Environmental Technologies
- Business & Entrepreneurship
- Education & Human Development
- Energy, Construction, & Utilities
- Global Trade
- Health
- ICT & Digital Media
- Life Sciences & Biotechnology
- Public Safety & Government
- Retail, Hospitality, & Tourism

K12 CAREER PATHWAYS

- Manufacturing & Product Design
- Transportation
- Agriculture & Natural Resources
- Business & Finance
- Marketing, Sales, & Services
- Building & Construction Trades
- Energy, Environment, & Utilities
- Engineering & Architecture
- Health Science & Medical Technology
- Information & Communication Technologies
- Arts, Media, & Entertainment
- Public Services
- Hospitality, Tourism, & Recreation
- Fashion & Interior Design
- Education, Child Development, & Family Services

COLLEGE MAP



1 MIRACOSTA COLLEGE
Oceanside

2 PALOMAR COLLEGE
San Marcos

3 SAN DIEGO MIRAMAR COLLEGE
Mira Mesa

4 GROSSMONT COLLEGE
El Cajon

5 SAN DIEGO MESA COLLEGE
Clairemont Mesa

6 CUYAMACA COLLEGE
El Cajon

7 SAN DIEGO CITY COLLEGE
Downtown San Diego

**8 SAN DIEGO COLLEGE OF
CONTINUING EDUCATION**
Across San Diego

9 SOUTHWESTERN COLLEGE
Chula Vista

10 IMPERIAL VALLEY COLLEGE
Imperial

COLLEGE OVERVIEW

CUYAMACA COLLEGE



El Cajon

Situated on 165 rolling acres in scenic Rancho San Diego, Cuyamaca College opened in 1978 and serves almost 10,000 students each semester. The school in eastern San Diego County offers 91 degree programs and 74 certificates. Cuyamaca College has renowned career education programs in automotive technology, ornamental horticulture, computer and information science, and engineering.



GROSSMONT COLLEGE



El Cajon

Grossmont College, located on a 135-acre mesa in northwest El Cajon, has been a vital part of the community since 1961. Grossmont serves almost 19,000 full- and part-time students per semester, and offers 95 degree and 73 certificate programs. Grossmont College has highly regarded career education programs in culinary arts, nursing and health, and law enforcement.



IMPERIAL VALLEY COLLEGE



Imperial

In 1962, a handful of people gathered on a 160-acre plot of land in Imperial, CA. It was the first day of classes for what would become Imperial Valley College. Today, 9,000 students learn across dozens of degree, certificate and career education programs each semester. Over the past decade, Imperial Valley College has continued major modernization programs, including construction of state-of-the-art Career Education buildings and labs, and establishment of innovative educational partnerships.



MIRACOSTA COLLEGE



Oceanside

The MiraCosta Community College District includes Oceanside, Carlsbad, La Costa, Encinitas, Olivenhain, Rancho Santa Fe, Cardiff by the Sea, Solana Beach, Del Mar, and Carmel Valley. With its coastal location, beautiful campuses, and strong academic programs, MiraCosta College attracts students from throughout San Diego County, the state, and the country as well as from abroad. Founded in 1934, today, MiraCosta is one of a handful of California community colleges that offers a bachelor's degree. Nearly 15,000 students take class each semester, including military members and veteran community.



PALOMAR COLLEGE



San Marcos

Palomar College is a public, two-year community college. Its main campus is located approximately 30 miles north of downtown San Diego, in San Marcos, California. Palomar enrolls nearly 30,000 full-time and part-time students and gives you the opportunity to choose from over 200 associate degrees, complete certificate training programs, and enjoy career education classes for lifelong learning.



SAN DIEGO CITY COLLEGE



Downtown San Diego

For more than 100 years, City College has been a public, two-year community college serving as the educational cornerstone of downtown San Diego. The college covers 60 acres, taking up 20% of downtown's footprint. By the numbers, the school offers 250 majors and certificate programs, and conducts 1,500 classes each semester for more than 17,000 students. Explore career education at City College.



SAN DIEGO COLLEGE OF CONTINUING EDUCATION



Across San Diego

Founded in 1914, SDCE is the adult education division of the San Diego Community College District. SDCE provides accessible, equitable, and innovative quality education across more than 70 programs and thousands of free classes. Programs are available at seven campuses in San Diego from the Barrio Logan community in the south, to Miramar in the north. Students also attend classes at over 200 community locations.



SAN DIEGO MESA COLLEGE



Clairemont Mesa

As one of California's largest community colleges, Mesa College ranks as San Diego's top transfer institution, with small classes, award-winning faculty, and a reputation as the leading college of equity and excellence. Conveniently located in central San Diego, Mesa offers Career Education programs in sectors such as allied health, Geographic Information Systems (GIS), business, multimedia, hospitality, culinary arts, fashion, architecture, and interior design along with a four-year baccalaureate degree in Health Information Management.



SAN DIEGO MIRAMAR COLLEGE



Mira Mesa

Founded in 1969, and located in Mira Mesa, Miramar College enrolls 15,000 students annually, in both online and on-campus classes. The school offers 117 degrees and certificates across 16 career education programs. Partnerships with local industries help prepare students for high-demand and well-paying jobs in the highly-competitive labor market, including biotechnology, paralegal, aviation, automotive, diesel and advanced transportation and energies.



SOUTHWESTERN COLLEGE



Chula Vista

Since its inception in 1961, Southwestern College has shaped the lives of hundreds of thousands of South County students through higher education. Nestled on a 156-acre campus in the heart of Chula Vista, the school provides a supportive environment, with over 320 associate degree and certificate programs available for a highly diverse traditional and non-traditional student population. Whether your goal is a certificate, degree, transferring to a four-year college, or pursuing career education, SWC offers extensive opportunities to meet educational, career and personal improvement goals with five locations throughout the South Bay.



ADDITIONAL RESOURCES



California Career Center

California Career Center is a virtual counselor for career and college exploration and planning resources to help students map their futures. The Career Center is focused on students but also contains resources for counselors, teachers, and parents/guardians.

<https://www.calcareercenter.org/>

California Career Center-My Stuff Resume

The My Stuff Resume enables students to create and revise resumes that can also be created and revised in their California Career Center "My Stuff" student accounts. Download from the Apple App Store or Google Play Store.

California Career Center-My Stuff Career Action Plan

The Career Action Plan enables students to create and revise Career Action Plans that can also be created and revised in their California Career Center "My Stuff" accounts. Look for "Career Action" in the Apple App Store or Google Play Store.



California Career Zone

Career exploration and planning system designed especially for students. Jobseekers, educators, and counselors will benefit from the wealth of information on 900 occupations from the Occupational Information Network (O*Net) database www.cacareerzone.org



California Community Colleges Career Coach

Discover majors and in-demand careers and education based on your interests. Take a career assessment, browse careers, or browse programs. Offers Military Search. Powered by EMSI.

<https://ccc.emsicc.com/>



California Community Colleges Career Education

Explore 200+ programs that allow students to learn by exploring, collaborating and doing.

<https://careered.cccco.edu/>



California Community Colleges My Path

CCC MyPath is a guided pathway onboarding platform that provides information and resources to incoming students, and bridges the gap between the online application and a college's local systems.

<https://www.cccmypath.org>



Career Surfer

Career Surfer is CalCRN's mobile application that can be downloaded for free from AppStore or Google Play. Basic information about the 900 occupations detailed on the California Career Zone.

<https://www.calcareercenter.org/Home/Content?contentID=404>



Career Technical Education

Career Technical Education is a program of study that involves a multiyear sequence of courses that integrates core academic knowledge with technical and occupational knowledge to provide students with a pathway to postsecondary education and careers.

www.cde.ca.gov/ci/ct/



CTE Model Curriculum Standards

The Career Technical Education (CTE) Model Curriculum Standards are designed to assist California districts and schools in developing high-quality curriculum and instruction to help ensure that students are career and college ready and to prepare them for future careers.

<https://www.cde.ca.gov/ci/ct/sf/ctemcstandards.asp>



Here to Career

The Here to Career app is an easy way to find careers that match your interest and get connected with tools to be successful. With Here to Career, you can view salary information and high-demand career opportunities in your area and find a local community college with a program to help you achieve your goals.

<https://foundationccc.org/What-We-Do/Workforce-Development/Here-to-Career-Mobile-App>



MyWorkforce Connection – Career Development Continuums

MS Career Development



HS Career Development



These documents describe practice along a continuum of support for students, from “self-awareness”, “career awareness”, and “career exploration”, to “career preparation” and “career training”. Each continuum describes WHAT you can do.



My Workforce Connection - Counselor Conference

Links to breakout session handouts, PowerPoints, and more.



My Workforce Connection - Resources

Resources such as research studies, archived webinars, and best practices in support of activities related to: 21st Century employability skills, career development, career exploration, career pathways, parent engagement, transitions, work-based learning. Resources are organized by topic and are searchable by type, format, and keywords. <https://myworkforceconnection.org/resources/>



O*NET

O*NET is a tool for career exploration and job analysis. It has detailed descriptions of the world of work for use by job seekers, workforce development and HR professionals, students, researchers, and more!

<https://www.onetonline.org/>



O*NET My Next Move

My Next Move is an interactive tool for job seekers and students to learn more about their career options. Users can find careers through keyword search; by browsing industries that employ different types of workers; or through the O*NET Interest Profiler, a tool that offers personalized career suggestions based on a person’s interests and level of work experience.

<https://www.mynextmove.org/>



K-12 To Community College Program Finder

A Pathway Mapping Tool that aligns career education programs and offerings in regional high schools and their corresponding programs of study in the ten community colleges in San Diego & Imperial Counties

<https://programfinder.com/>



San Diego & Imperial Counties Community Colleges

The regional career education website for the San Diego and Imperial Counties Community Colleges. Includes career and college exploration as well as information about fees and how to apply.

<https://careered.org/>



Salary Surfer

To help students and their families make important decisions about investing time and money in a college education, the California Community Colleges Chancellor’s Office, through Salary Surfer, is providing comparative information about the earnings of recent California community college graduates who received an award in a specific program of study.

<https://salarysurfer.cccco.edu/SalarySurfer.aspx>

LEARN MORE. EARN MORE.

CareerEd.org



POWERED BY
California Community Colleges

COMMUNITY COLLEGES
SAN DIEGO & IMPERIAL COUNTIES
CAREER EDUCATION



C·O·E

CENTERS OF EXCELLENCE
FOR LABOR MARKET RESEARCH