



**PORT of
SAN DIEGO**
Waterfront of Opportunity

**Port of San Diego Presentation to the
San Diego Community College District
Workforce Development Council
January 13, 2023**

Board of Port Commissioners



Rafael Castellanos
Chairman



Sandy Naranjo
Vice-Chair



Danielle Moore
Secretary



Dan Malcolm



Ann Y. Moore



Frank Urtasun



Michael Zucchet

Today's Attendees

Port Administration

- Allen Broughton, Assistant Director, General Services
- Michael Brown, Vice President of Marketing and Communications
- Jason Giffen, Vice President Planning & Environment
 - Paula Silvia, Program Director, Aquaculture and Blue Technology
 - Eileen Maher, Environmental Conservation
- Elba Gomez, Vice President of Administration/CAO
 - Michelle Corbin, Director of People Services
- Magda Fernandez, Harbor Police Chief/Vice President of Public Safety
- Rebecca Harrington, Assistant General Counsel
- Michael LaFleur, Vice President of Maritime
- Shaun Sumner, Vice President of Business Operations
- Mark Yeilding, Port Auditor

Port Tenants

- Sharon Cloward, President, San Diego Port Tenants Association
- Carlos Arturo Cervantes-NASSCO
- Susie Baumann-Bali Hai Restaurants & Tom Ham's Lighthouse
- Terry Buis-BAE Systems
- Brad Engel-Flagship Cruises
- Karline DeShane/Sophie Silvestri-Pasha Automotive Services
- Brandon Haley- Ship Repair Association
- Sarah Marsh-Dole
- Frank Ursitti-H&M Landing
- Bartell Hotels

Port of San Diego Granted Lands

34

miles of waterfront

3,677

acres of Submerged Tidelands

2,404

acres of Port Tidelands

Approximately

8,300

acres of new Submerged Tidelands
(subject to survey) as of January 1, 2020



Economic Engine

More than \$1.87 Billion Invested Since 1963



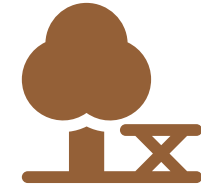
- Two Maritime Cargo Terminals
- B Street Cruise Ship Terminal
- Port Pavilion on Broadway Pier
- Expansion of NC Marine Terminal Wharf
- Tenth Avenue Marine Terminal Modernization Project



- Chula Vista Bayfront
- SD Convention Center & Expansion
- Airport Terminals and Expansions
- Shelter Island
- Harbor Island
- National City Aquatic Center



- Native Oyster Living Shoreline
- South Bay Wildlife Refuge
- Wildlife and Habitat Preservation

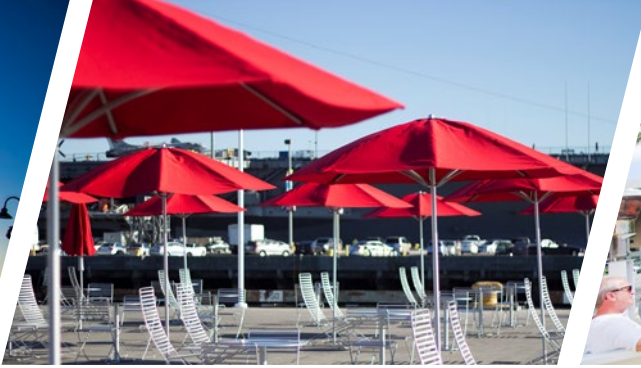


- 22 Dedicated Public Parks
- National City Marina Basin
- North Embarcadero Visionary Plan Phase I
- Shelter Island Boat Launch Facility



PORT of SAN DIEGO

Experiences



5

Public Piers

9

Museums & Attractions

18

Hotels

22

Parks

70

Artworks

74

Restaurants

80+

Sponsored Events



4th

Largest of the 11
California Ports

2

Cargo
Terminals

2

Cruise
Terminals

1 of 18

U.S. Strategic
Ports



18

Percent decrease in
GHG emissions

142

Million gallons of water
saved in last decade

3,000

Ton reduction in GHG
emissions in one year

987,000

kW hours of energy saved with
LED lighting retrofits



120

Sworn employees

20

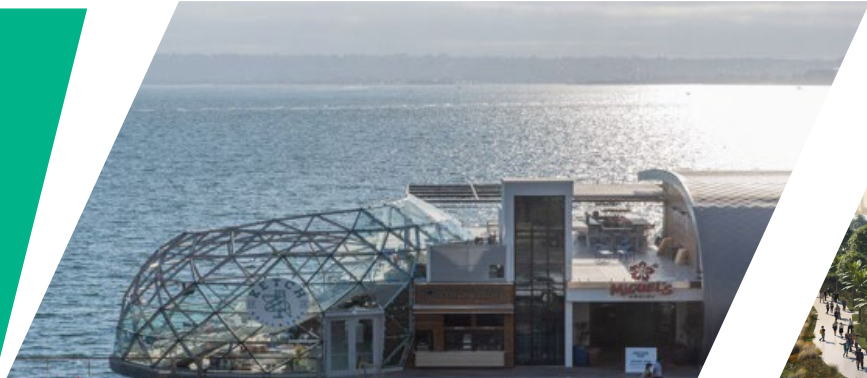
Dive Team members

6

K-9 units

3

Federal task forces



800+

Tenants and subtenants,
8,700 hotel rooms, 78+
restaurants, 3 shipbuilding &
repair companies

\$1.3B

Under construction on the Chula Vista
Bayfront

\$4B

70-acre potential redevelopment
at Central Embarcadero



**PORT of
SAN DIEGO**
Waterfront of Opportunity

Thank You!