

SWP Priorities and Model ROC

September 9, 2020



COMMUNITY COLLEGES

SAN DIEGO & IMPERIAL COUNTIES

CAREER EDUCATION

2015 Strong Workforce Task Force

- Recommendations

Adopted by the Board of Governors in Fall 2015

#1-2	Student Success
#3	Career Pathways
#4-6	Workforce Data & Outcomes
#7-12	Curriculum
#13-16	CTE Faculty
#17-20	Regional Coordination
#21-25	Funding

Student Success

- Broaden and enhance career exploration and planning, work-based learning opportunities and other supports for students.

Career Pathways

- Develop and broadly publicize industry-informed career pathways that prepare students for jobs needed within the regional labor market.

CTE Faculty

- Enhance professional development opportunities for CTE faculty to maintain industry and program relevancy.

Curriculum Recommendations

7. Revise the curriculum development process to ensure alignment from education to employment.
8. Evaluate, revise and resource the local, regional, and statewide CTE curriculum approval process.
9. Improve program review, evaluation, and revision processes to ensure program relevancy.
10. Facilitate curricular portability across institutions.
11. Develop, identify and disseminate effective CTE practices.

Regional Coordination

- Strengthen communication, coordination and decision-making between regional CTE efforts and the colleges to meet regional labor market needs.
- Develop regional leadership and operational partnerships among community college, industry, labor and other workforce and economic development entities to improve the delivery of all CTE efforts.
- Develop robust connections between community colleges, business and industry representatives, labor and other regional workforce development partners to align college programs with regional and industry needs and provide support for CTE programs.
- Create a separate, predictable, targeted and sustained funding stream that leverages multiple state, federal, and local CTE and workforce funds to support and infrastructure for collaboration at the state, regional and local levels; regional funding of program start-up and innovation; and other coordination activities.

Regional Priorities

- ✓ Data/Research/Labor Market Information
- ✓ Career Pathways
- ✓ Job Placement
- ✓ Marketing
- ✓ Pathway Navigation (onboarding)
- ✓ Work-based Learning

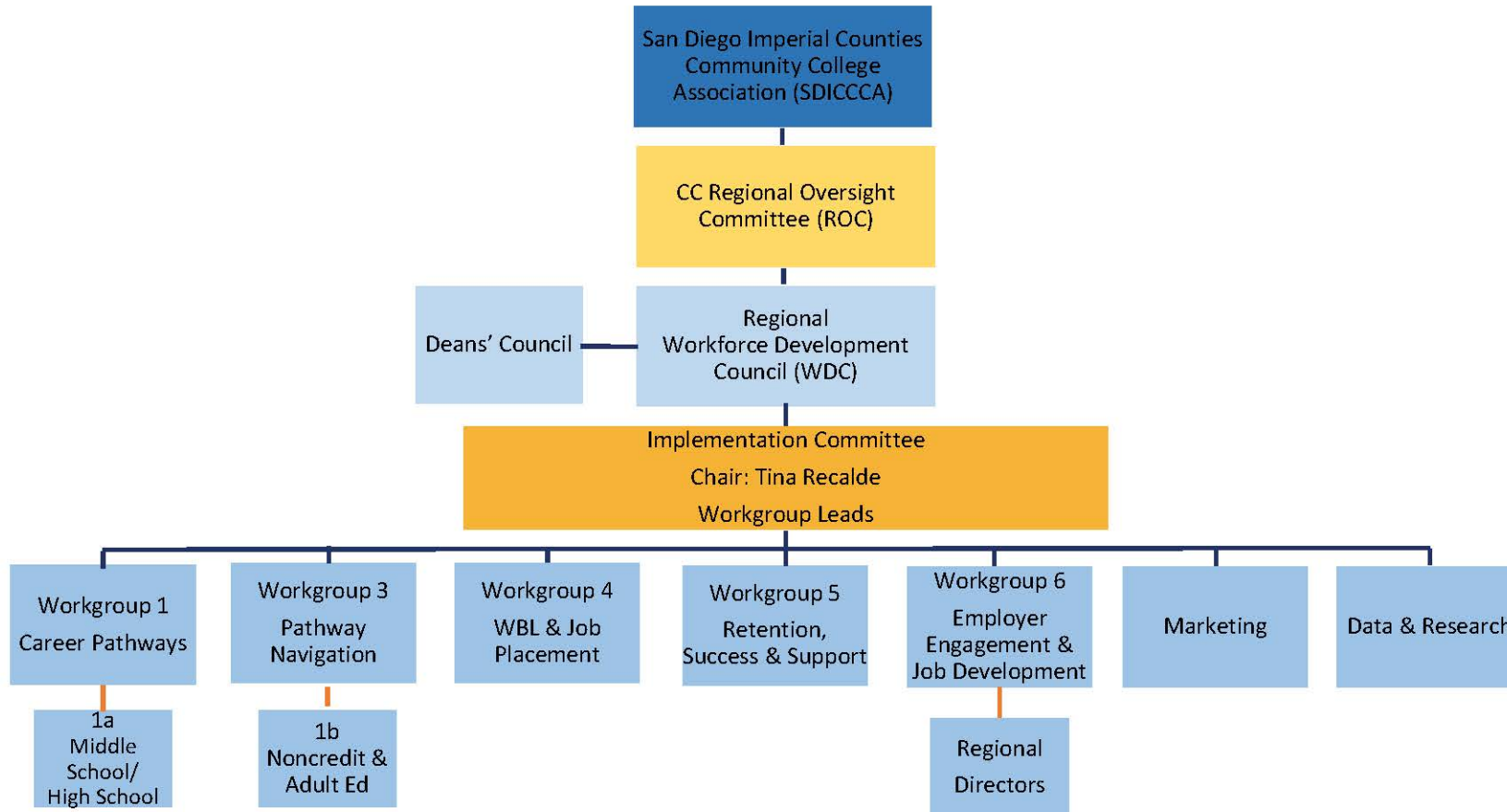




Strong Workforce Program Implementation

COMMUNITY COLLEGES
 SAN DIEGO & IMPERIAL COUNTIES
CAREER EDUCATION

- *1: A. Perman, SDCCCD
 A. Love, SDCOE
 D. Cabanilla, ICOE
- *1a: K. Zant, Region
 G. Esguerra, City
 S. Vielma, SDUSD
- *1b: K. Zant, Region
 S. Sebring, Palomar
 K. Bellaart, GUHSD
- 3: C. Estrada, Mesa
 J. Ayala, Grossmont
- 4: K. McMackin, Region
 L. McLemore, Cuyamaca
- *K12 Participation



- 5: M. Smith, Region
 T. Ngo Bartel, Region
- 6: K. McMackin, Region
 T. Ngo Bartel, Region
 M. Fritch, Palomar
- Marketing:
 M. Ash, Region
 D. Brown, Mesa
- Data/Research:
 Z. Lindstrom, MiraCosta
 T. Ngo Bartel, Region

A Community College Student's Road to Success

